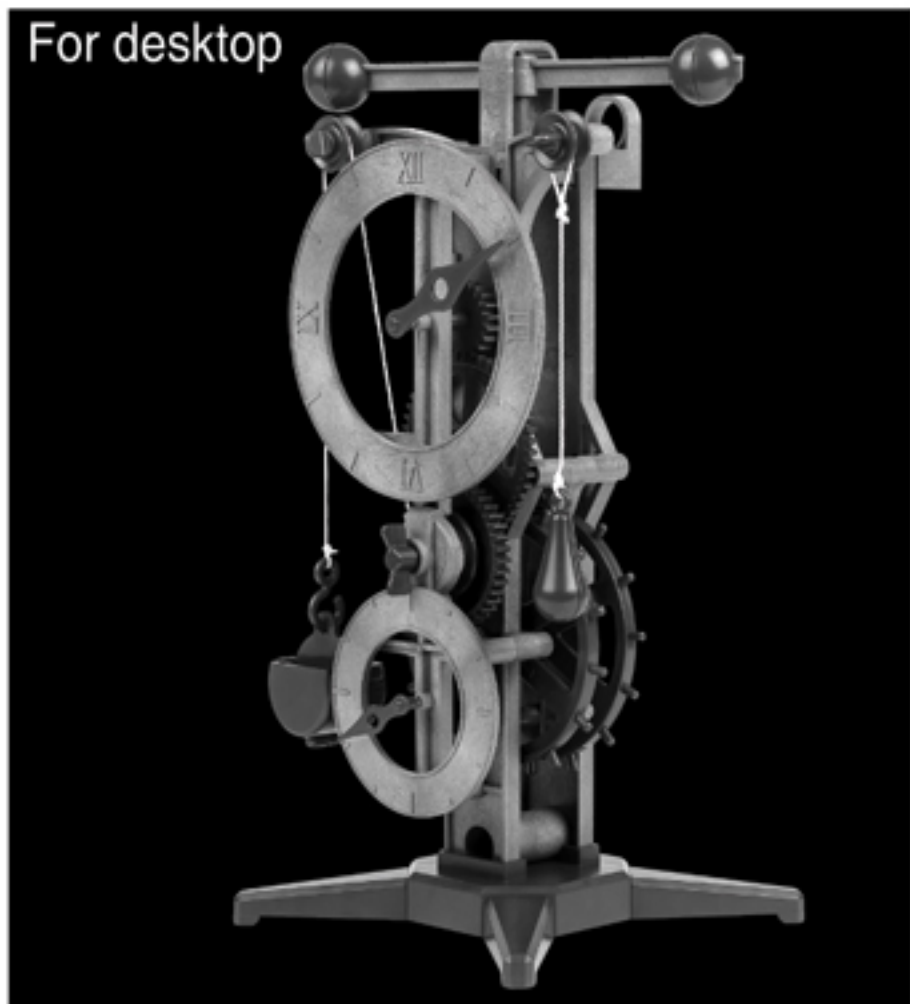
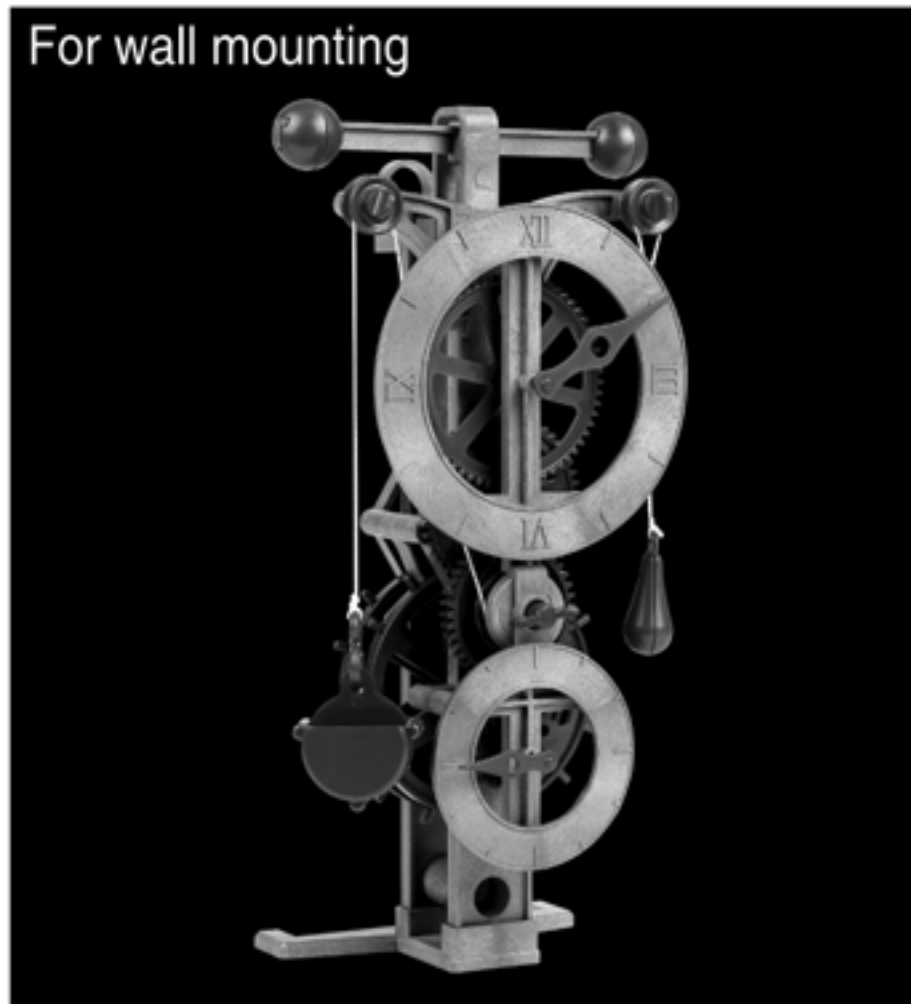


For desktop

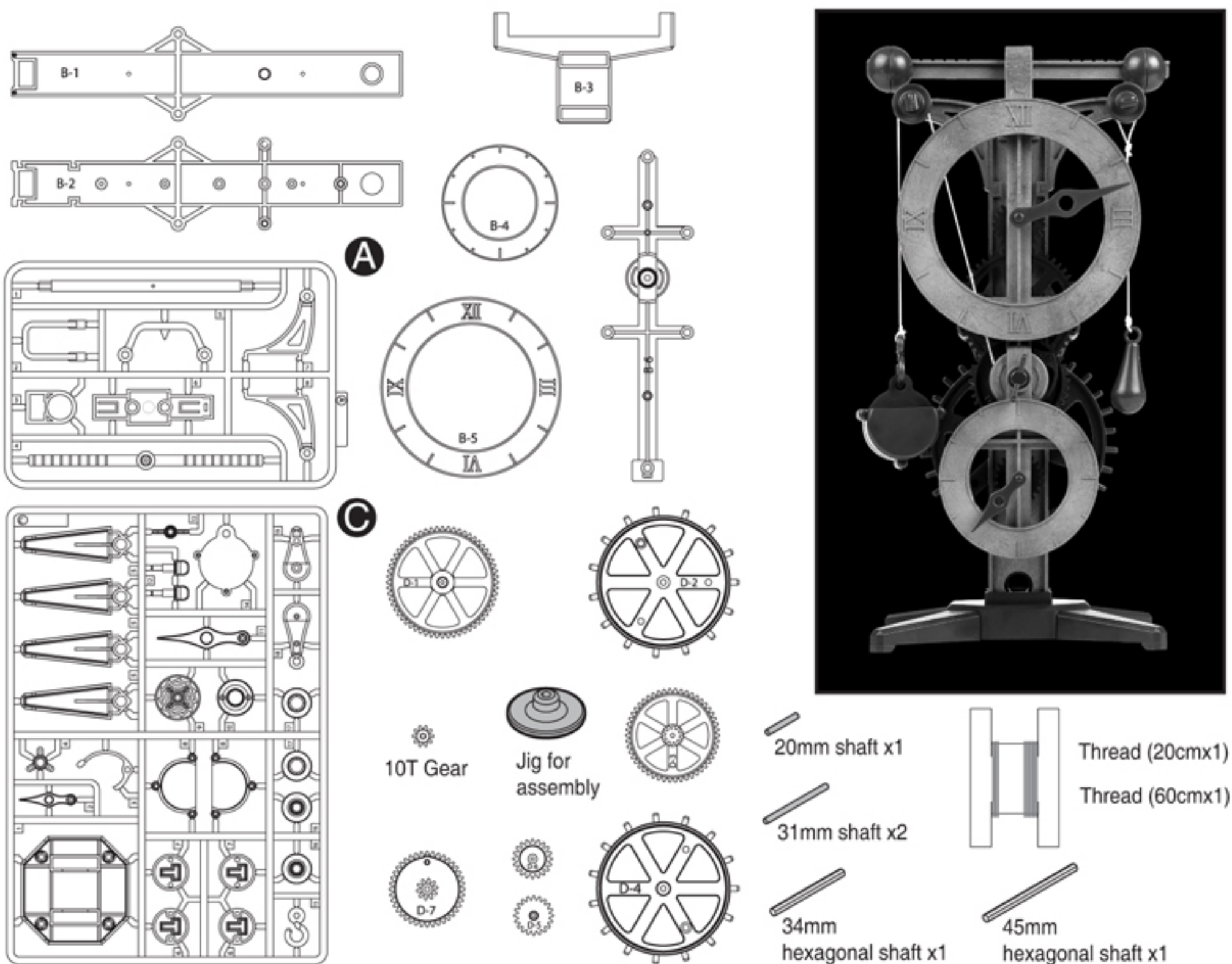


For wall mounting

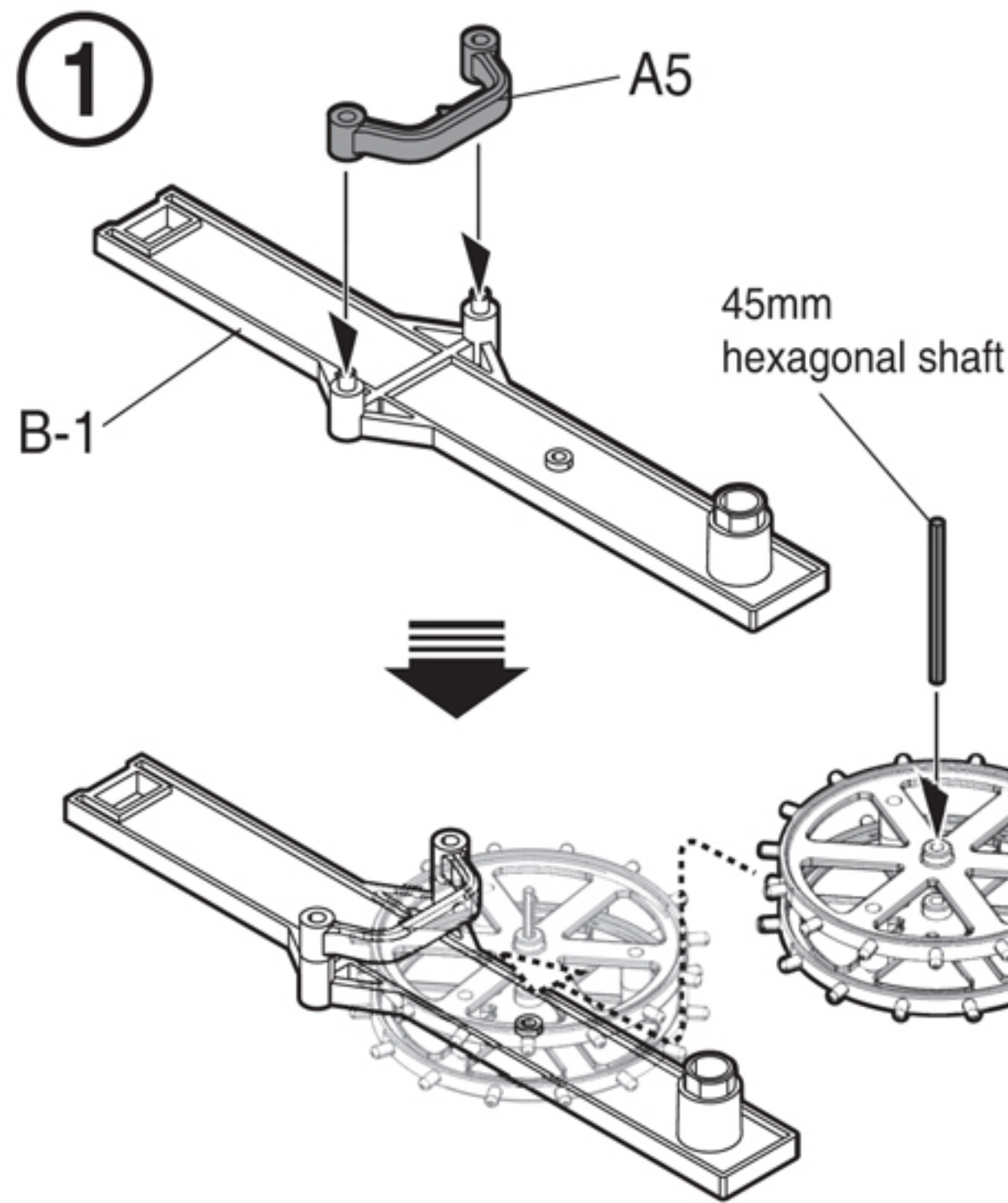


Assemble to match the configuration of your choice!

## Parts Location Diagram

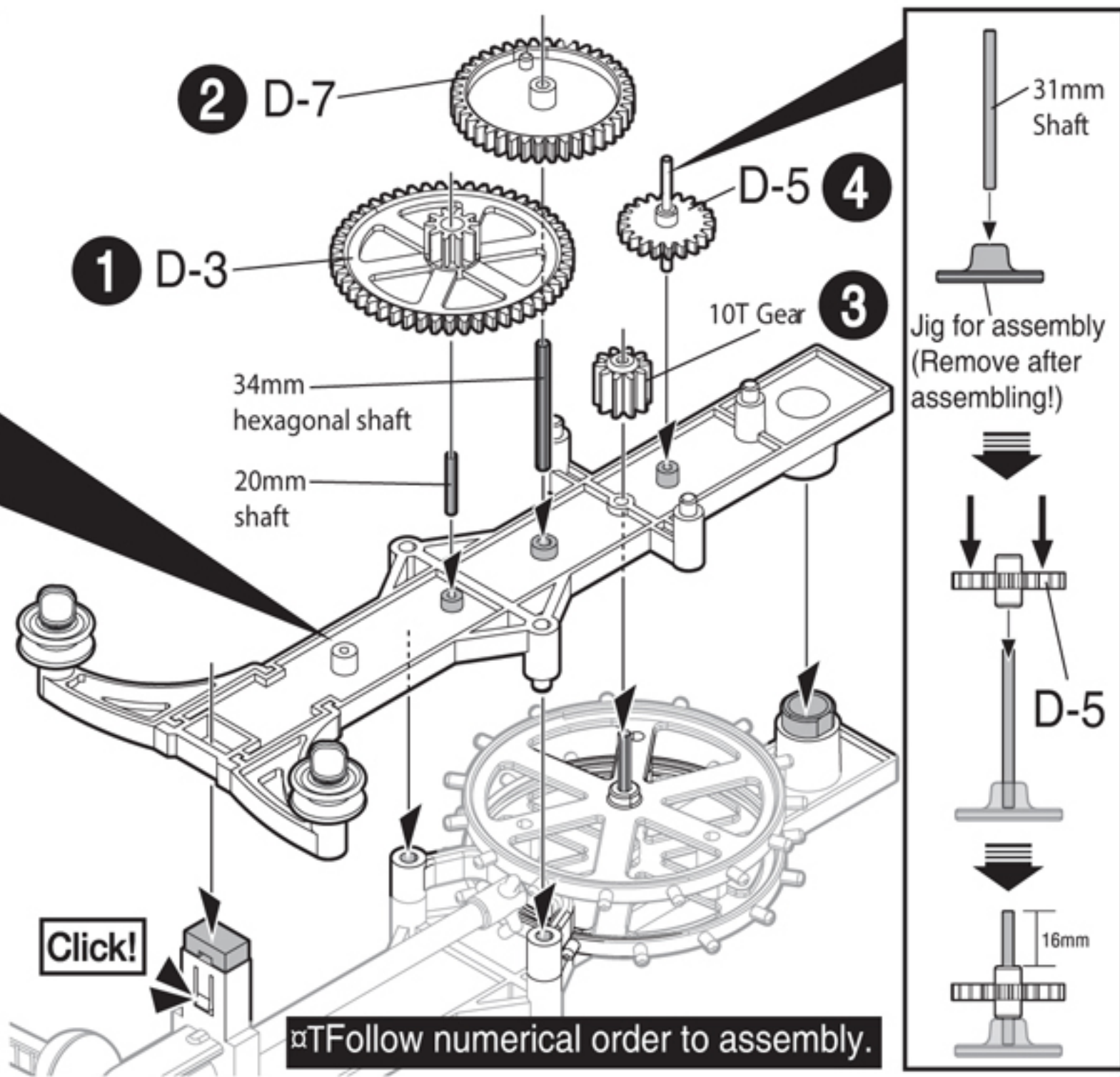
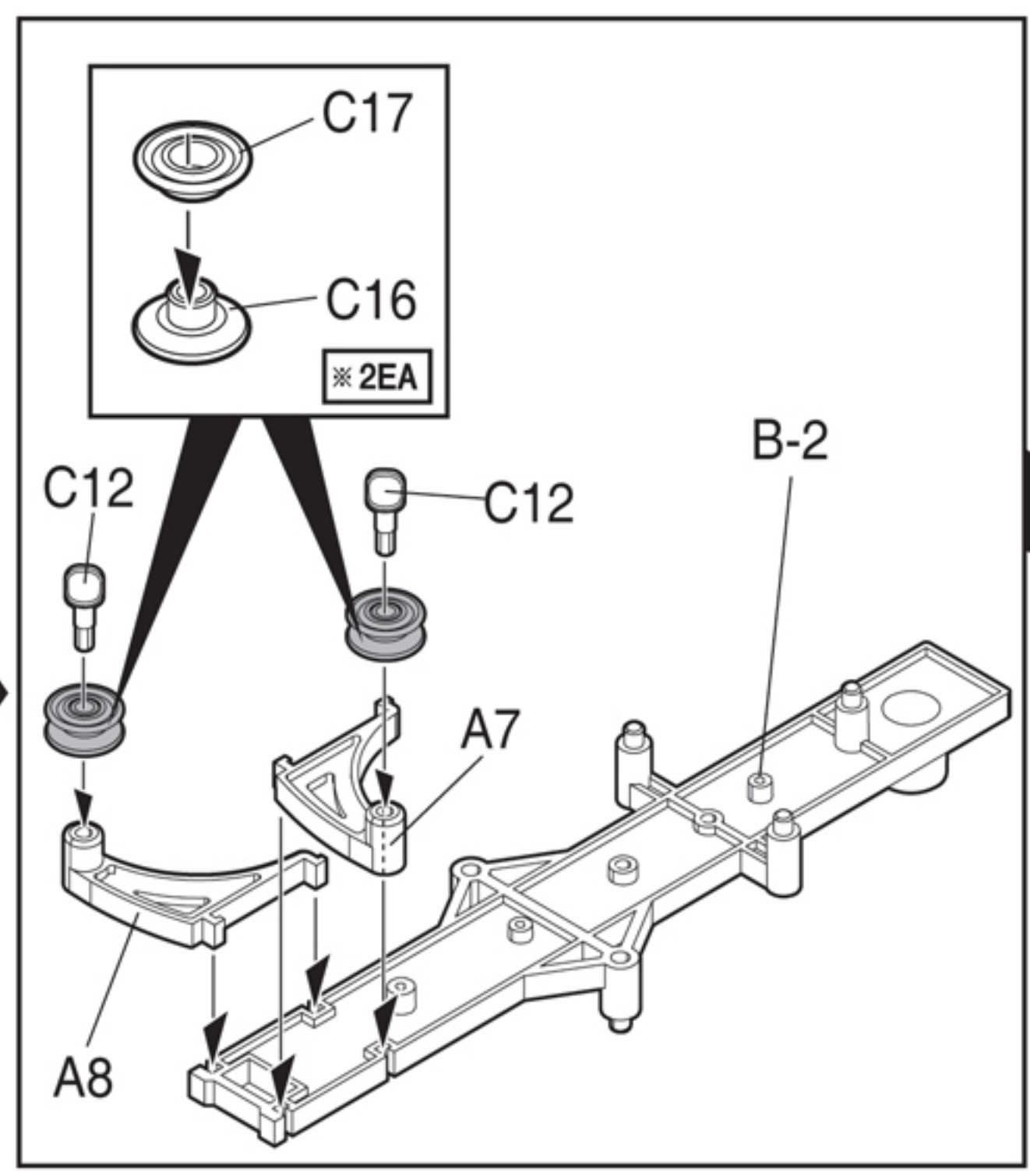
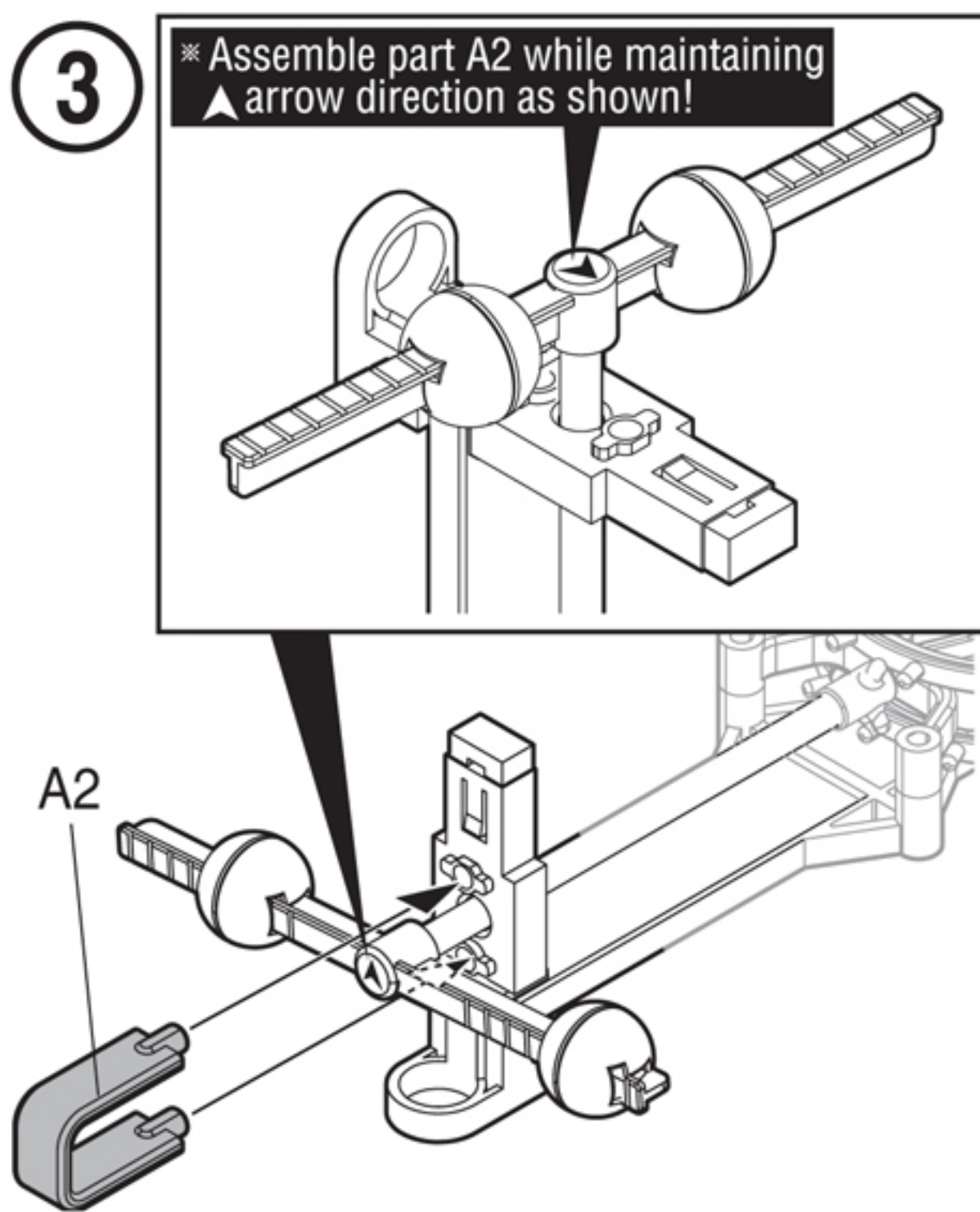
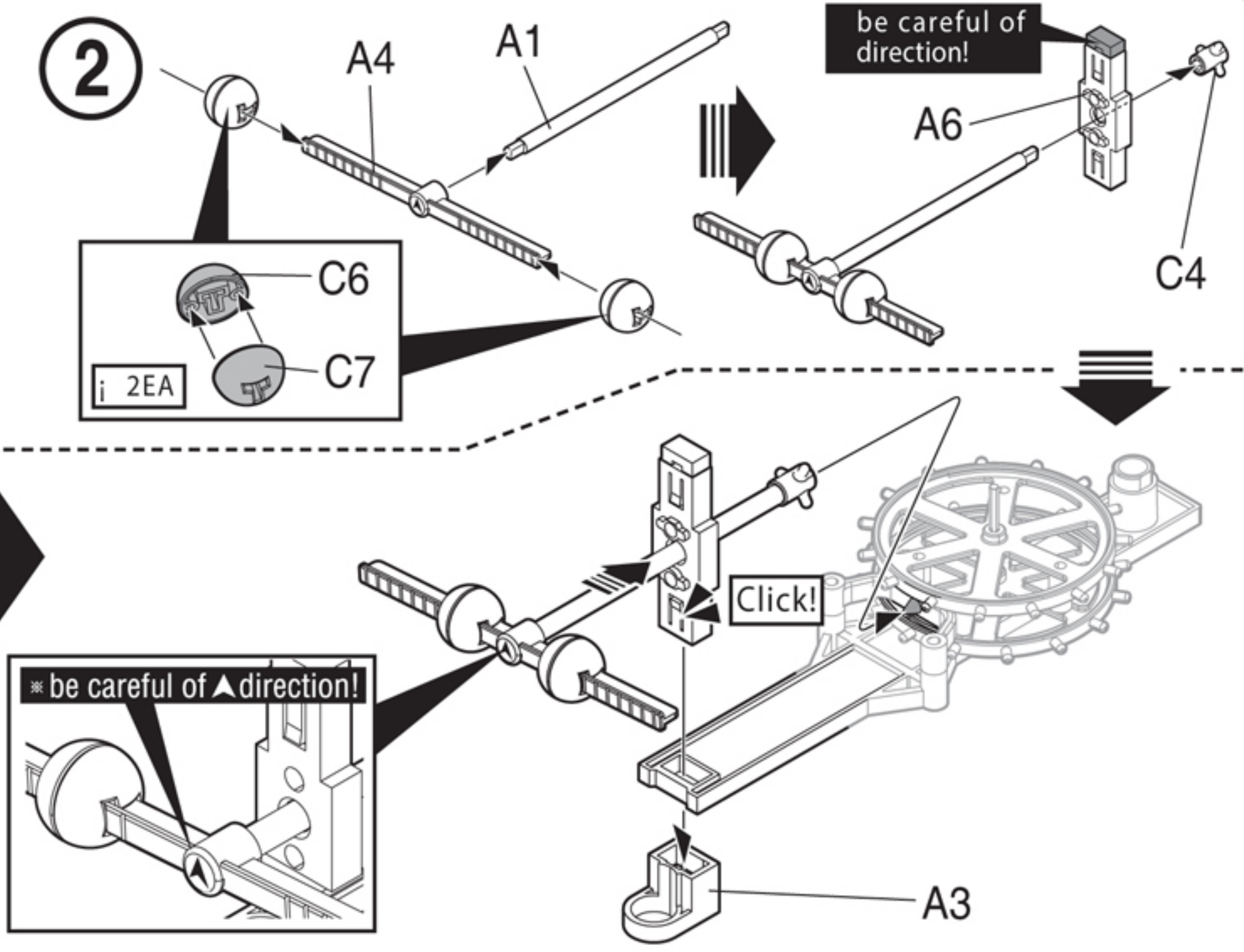
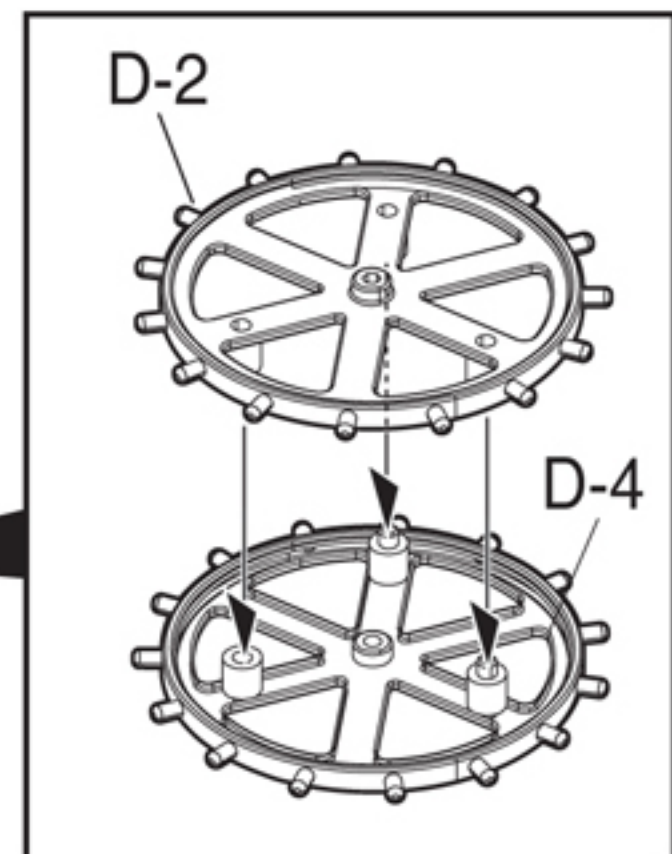






Actual Length

	45mm hexagonal shaft x1
	34mm hexagonal shaft x1
	31mm shaft x2
	20mm shaft x1





4

# -Optional assembly of gear-

D-6 (4:1)

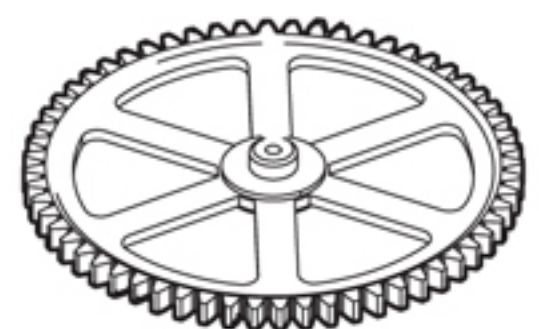


The long hand  
1 rotation



A short needle  
4 rotations  
(About 4 minutes)

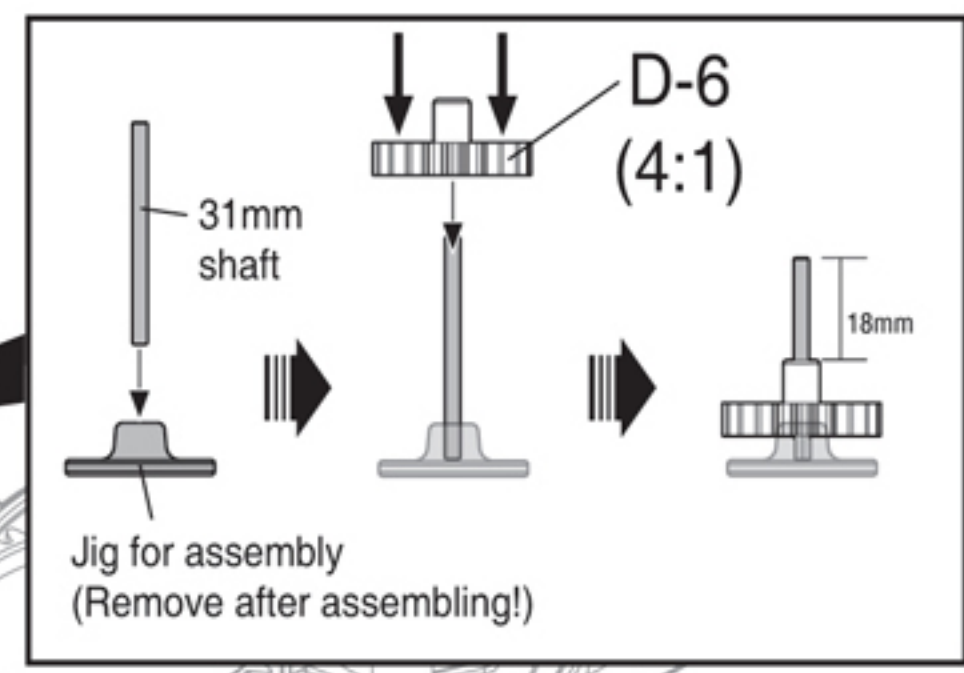
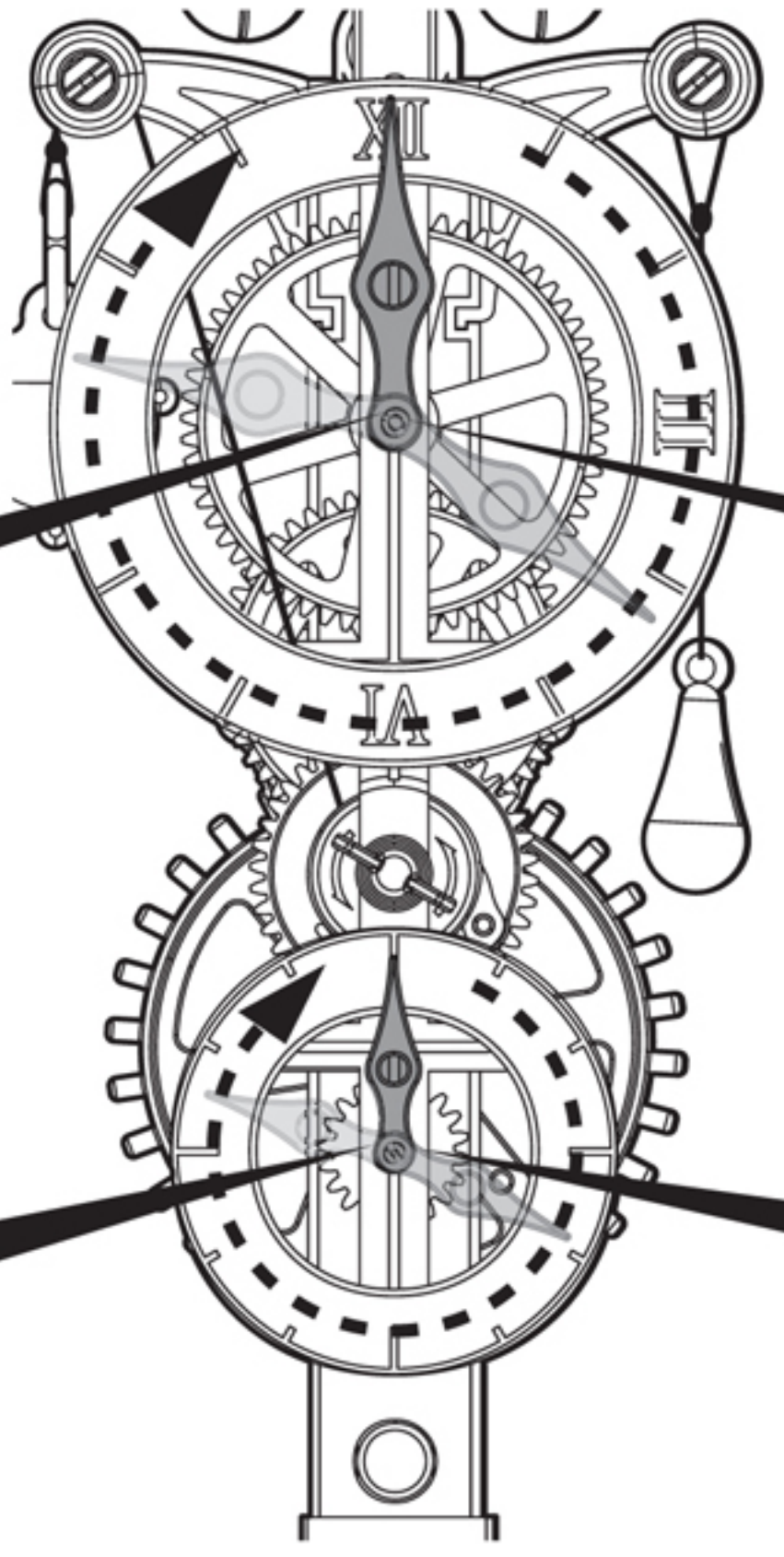
D-1 (60:1)



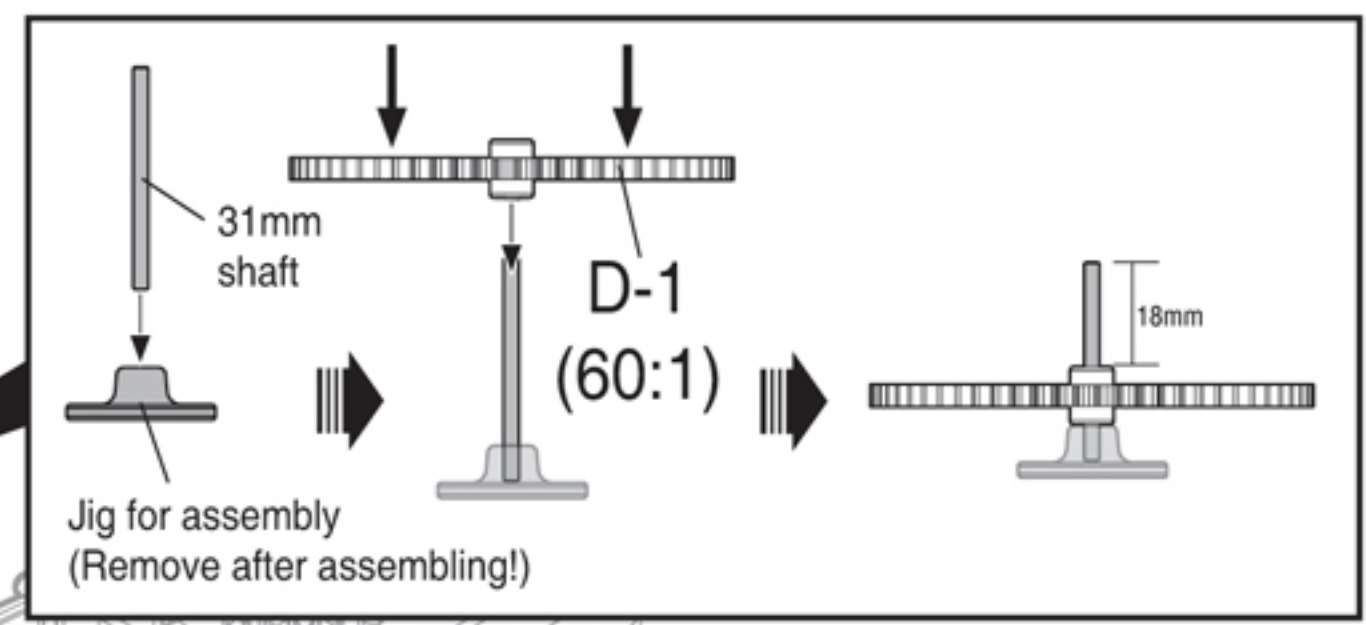
The long hand  
1 rotation



A short needle  
60 rotations  
(About 60 minutes)



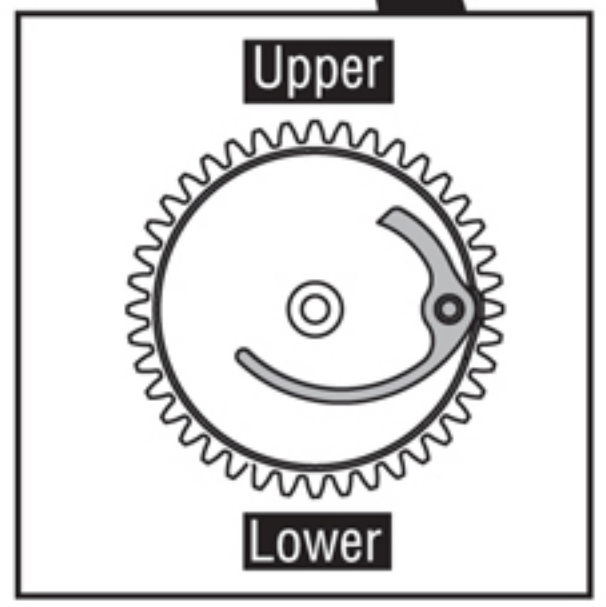
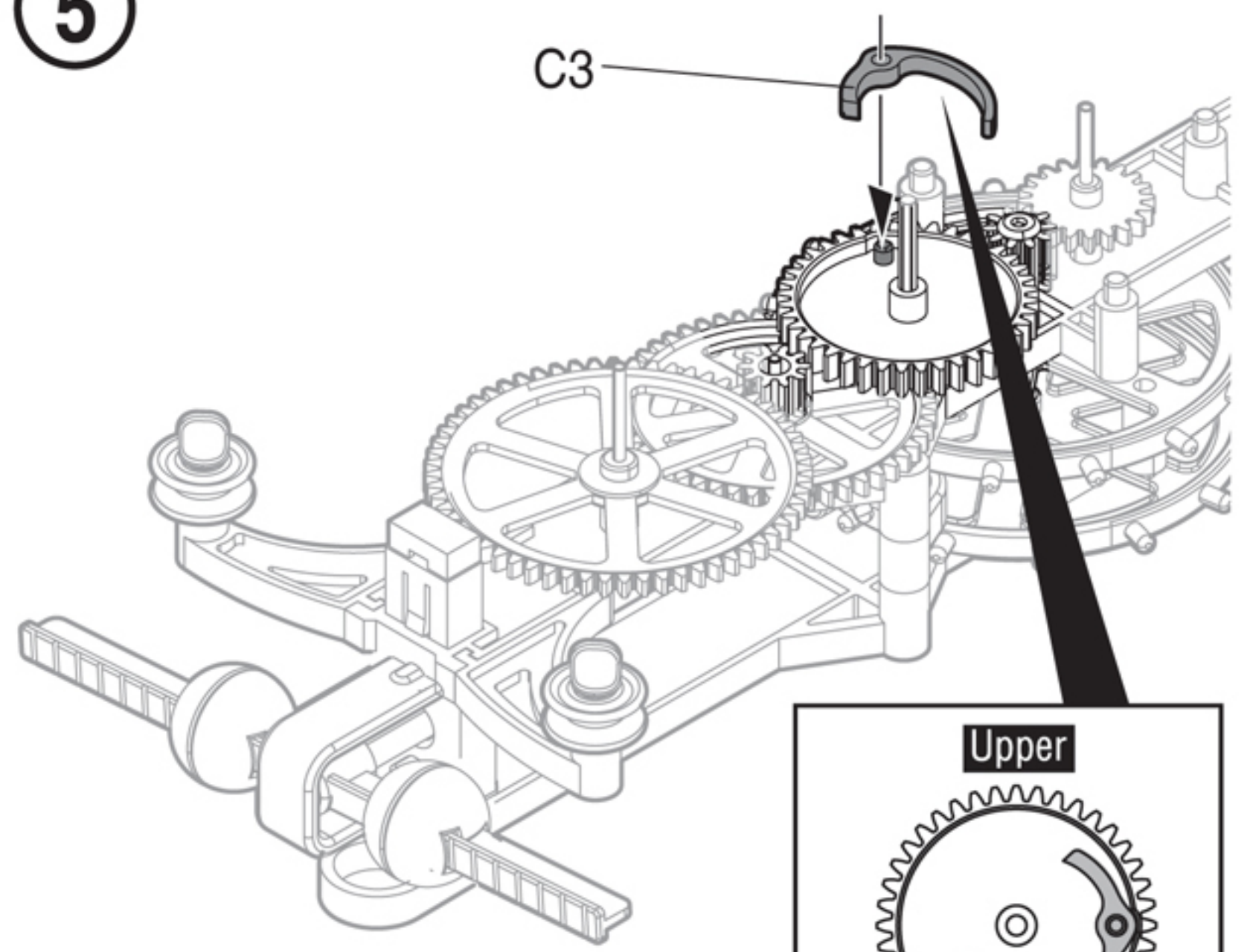
D-1



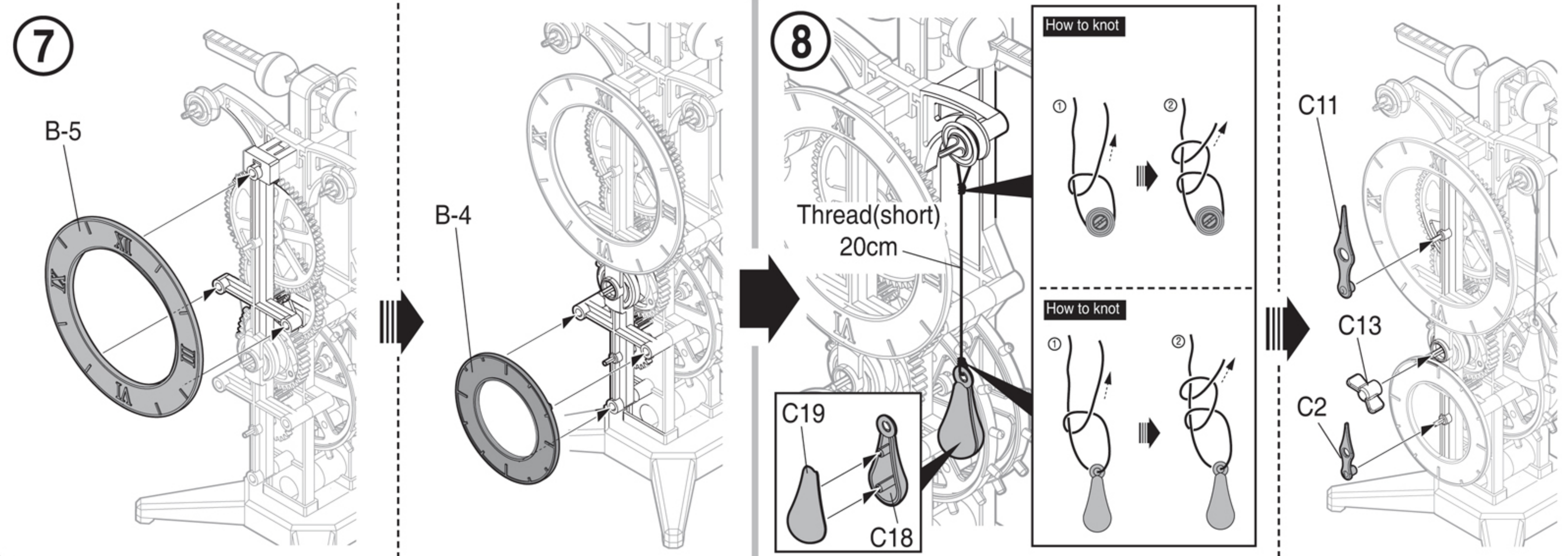
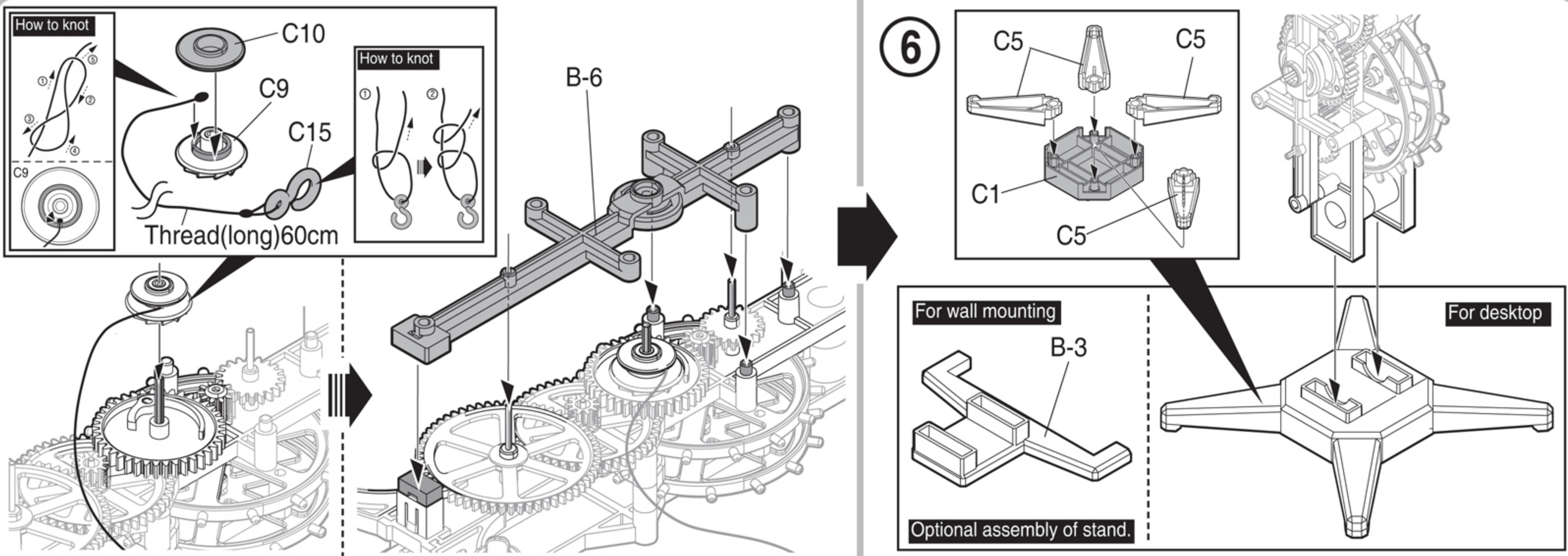
**Optional assembly!**

5

C3





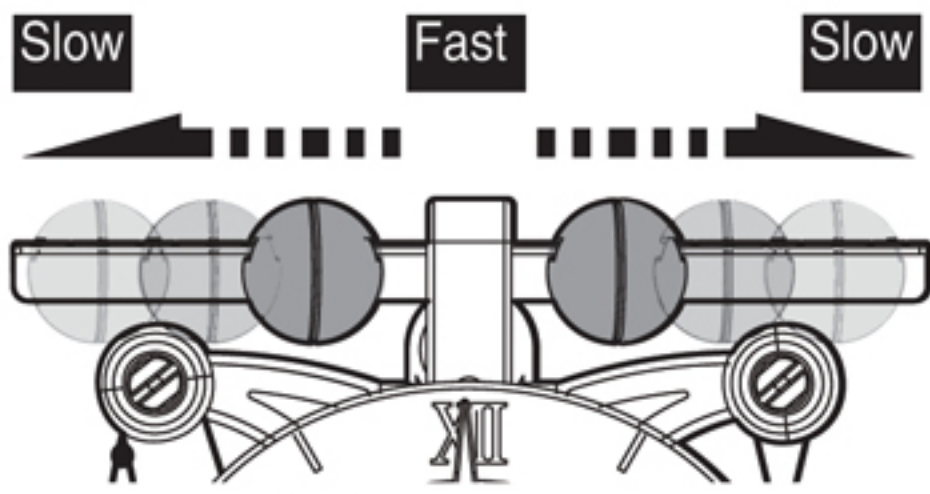




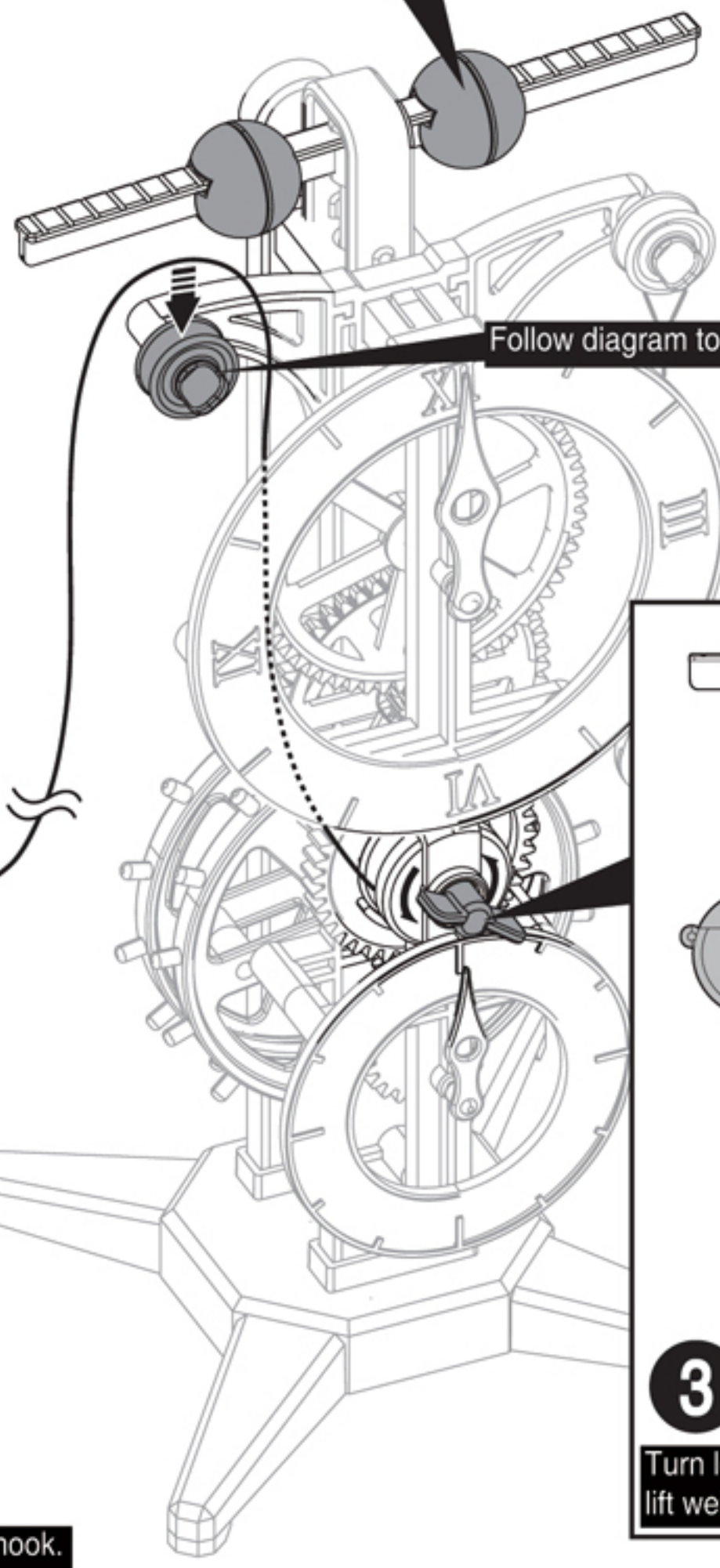
# Method of operation

Follow numerical order to install and operate.

Control time by adjusting interval of pendulum.



Operating time is in inverse proportion to weight(number) of coins.



**1**

Follow diagram to thread pulley.

**2**

Hang assembled weight on hook.

**3**

Turn lever in direction of arrow and lift weight as shown in diagram.