

INSTRUCTION FOR USE

LOVI 360° Cup

LOVI 360°

The cup is specifically designed to assist your child to progress from a toddler to spouted cup to brake style drinking vessel without the risk of a major spillage. Because there is no spout it will help your child to progress his/her drinking skills naturally. The revolutionary one piece valve allows your child to drink from anywhere around the rim. Thanks to it's simplicity, LOVI 360° cup is recommended for children of all ages but especially those who don't need or want bottle/training cup anymore.

Directions for cleaning.

Please read the following instructions before use and retain for future reference. Before each use wash in warm soapy water and rinse well. Avoid using sharp or abrasive materials when cleaning. The lid is easy to clean, simply wash in warm water, however for a more thorough clean you can separate the lid as shown in the diagram provided. Do not push anything through the valve as it can damage the seal. Do not stretch the valve to strong, it may not come back to it's previous form. Do not boil. Do not rinse with boiling water. Do not use this product in a microwave. This product is not recommended for use in a dishwasher

For your child's safety and health. Warning!

Always use this product under adult supervision. Inspect carefully before each use. Throw away at the first signs of damage or weakness. Keep the cup clean. Thick food (e.g. suspensions with fruit pieces) may cork a valve. Do not leave your baby unattended during feeding. Always check the liquid temperature before feeding. Continuous and prolonged suckling of fluids may cause tooth decay. Warning! This product is not a toy. Keep away from reach of children when not in use.

'SteriTouch® harnesses the natural antibacterial properties of silver to reduce the growth of illness causing microorganisms. Independent laboratory tests have demonstrated that SteriTouch® will reduce the population of bacteria such as e.coli and MRSA by up to 99,99% within 24h. SteriTouch® is not intended to remove the need for normal cleaning practices, but will provide increased protection between cleaning cycles.'

SteriTouch® protection is added only to the collar (valve).

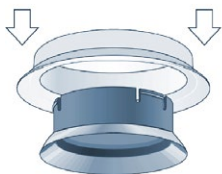


fig. 1

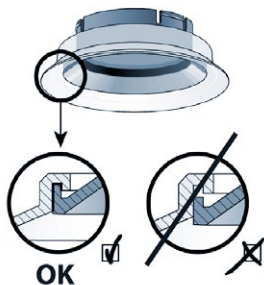


fig. 2

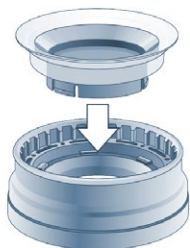


fig. 3



fig. 4