



Connecting people with technology

UX Pro – Gen 2

#clevertouch | info@clevertouch.com



Embrace business-wide collaboration

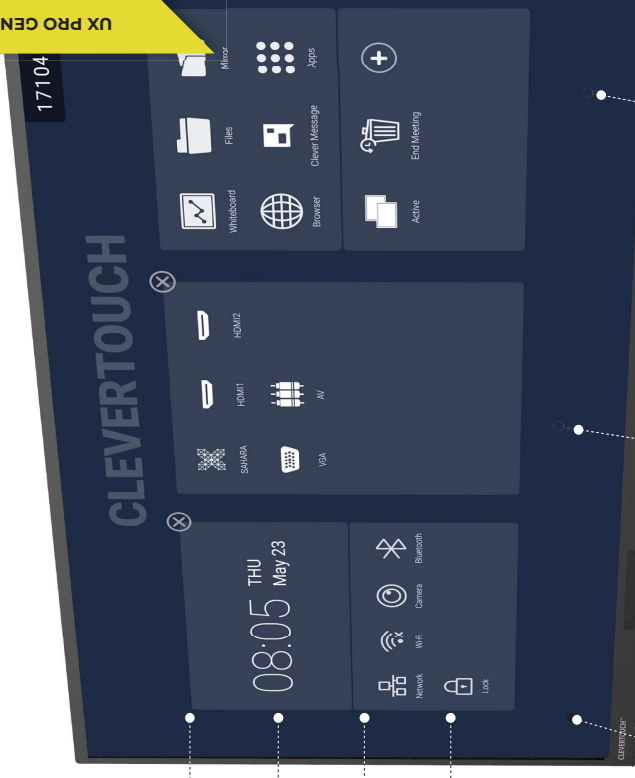


Designed for hybrid meetings

UX Pro combines the power and security of an Intel OPS Windows 10 Pro PC, with a sleek design for one-touch UC and VC applications.

From the boardroom to the breakout area, the Clevertouch all-in-one Enterprise Ecosystem facilitates business-wide collaboration - empowering business leaders and staff to maximise their potential. Start a Video conference call with one click, Multi-host Zoom, Teams or any Video conference application at the same time.

Book your screen before a meeting and have videos or bespoke content play on your screen when it is not being used. Let Clevertouch transform your enterprise communications and workspaces into an integrated, seamless experience.



Ops i5 or i7 Intel PC

Array microphone

USB-C charging

Android/PC

Switch between Android and PC mode, or switch off the Android capabilities and just use the PC.

Security Matters

Advanced security and network options.

Stay Connected

Compatible with your preferred UC and VC applications

USB Camera

Works with any USB camera



Customise your home screen

When the screen powers on the home screen is completely customisable, so you can add your company branding, logos and news. You can choose the applications you see on launch, be it UC platforms such as Zoom or Teams, or collaborative workflow apps such as Trello or Miro. You can also sync with calendar apps so that the days meetings can be shown on screen.



Add any app or software

With an optional slot-in Windows 10 Pro Intel® Core™ i5/i7 PC, you can load your existing apps and software from your network, enabling you to collaborate securely across the globe, and access the same features as your colleagues, wherever they are based.



Networking and security

Our touchscreens are designed to integrate with your current system set up. With remote management tools, increased security and network options. Settings can be locked down to create completely secure connections.



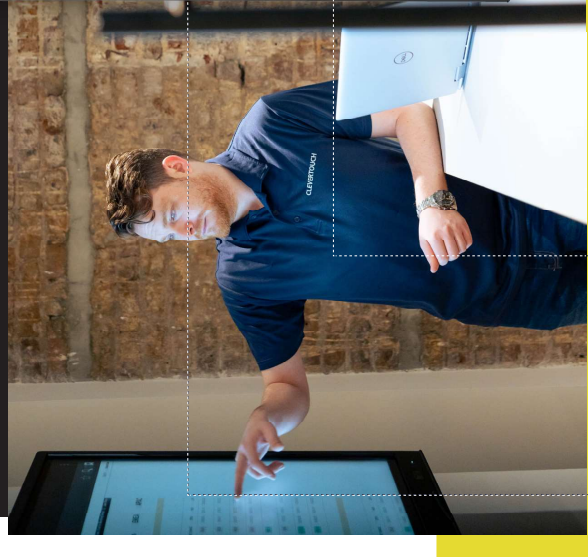
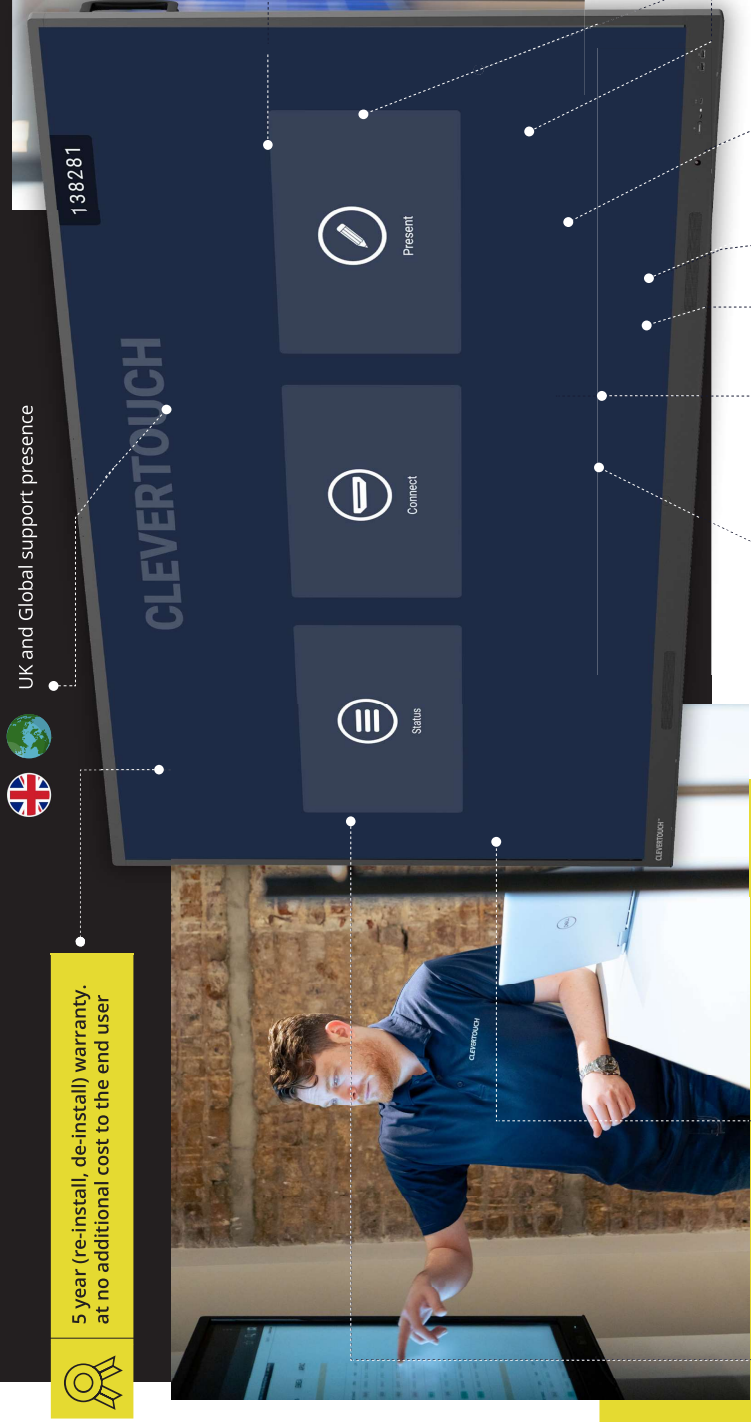
Screen mirroring

Any device can mirror content to the UX Pro Display. Whether meeting attendees come in with their phone, laptop or tablet, they can connect to UX Pro, without needing to plug in or download an app. Clevertouch screen mirroring is compatible with Android, iOS, Windows and Chrome devices.

UK and Global support presence



5 year (re-install, de-install) warranty. at no additional cost to the end user



138281

CLEVERTOUCH

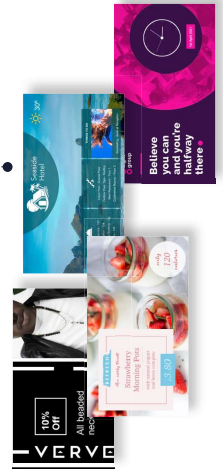
Present

Connect

Status



Clevertouch onscreen touch technology is ours, not white labelled.



Screens that have in built signage that can be activated at no additional cost and with no OPEX cost and managed remotely.



Screens that can run with PC (Windows 10) as an operating system or Android, or even both when required.

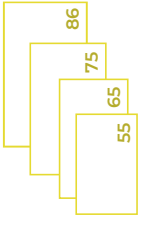
Easy Windows 10 environment that End users can manage using their existing MDM like Intune.



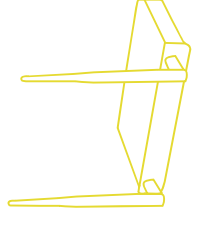
Link all your office displays: video walls, Non touch screens and touch screens together through ClevertouchLive, have them play the same or bespoke content.



Free of charge screen recorder, perfect for practicing sessions outside of Teams or Zoom.



UX Pro comes in four sizes. Each size has the same internal specification, so you can expect the same experience with any size screen.



Custom OPS (Optional Extra), with 15 8G RAM and i7 16G RAM as off the shelf PCs.

Users can build their own OPS where needed and just slot in, giving you the ultimate control over your display.



Sharing dongles and App are free of charge with UX Pro Screens. The USB-C dongle is secure, not needing to go on a network or install anything on users devices. The dongle also has the benefit of working peer to peer.



Touch and Non-touch screens are agnostic so can easily work with external sharing devices.



Clevertouch offers a white board on PC that can be accessed ad hoc, no need to open up Teams or login to Microsoft whiteboard to access a white board.

UX Pro – Gen 2 What's New?



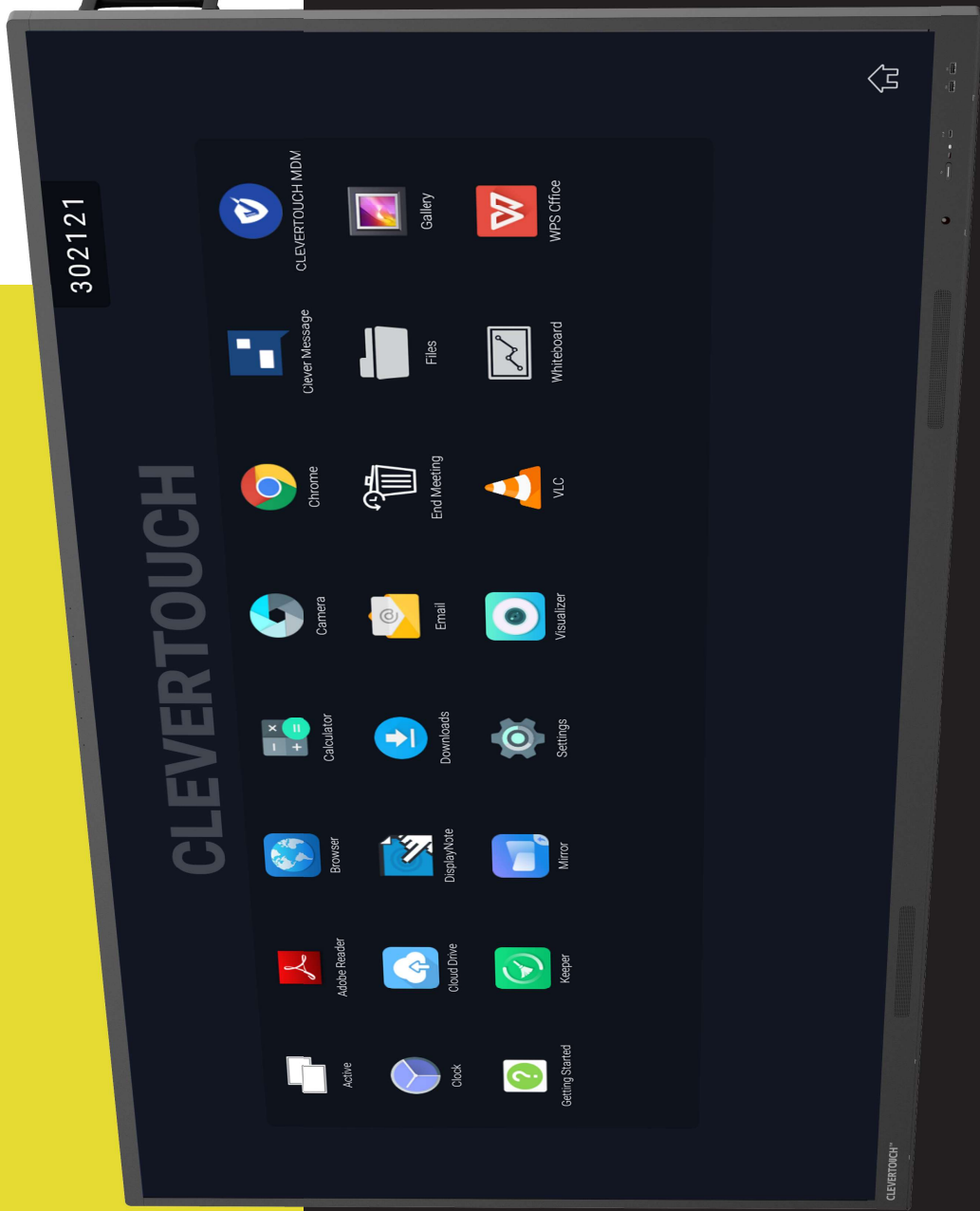
Upgraded 6 array microphone



Zero bonding - no air gap gives greater accuracy, improved performance and vibrant imagery



Android 9 4K Chipset - 6GB RAM / 64GB ROM



Front-facing speakers and subwoofer for clearer, more powerful quality audio



Front-mounted power button



Ambient light sensor



Front-mounted USB-A port



Front-mounted latest-generation USB-C - allows switching between any device

Display

Diagonal Size	55" 4K, 65" 4K, 75" 4K, 86" 4K
Screen Type	TFT LCD - Direct LED Backlight
Aspect Ratio	16:9
Display Colours	1.07 Billion (16bit)
Resolution	4K UHD (3840 x 2160)
Response Time	5ms
Refresh Rate	60Hz
LCD Viewing Angle	178°
Brightness	420 cd/m ²
Contrast Ratio	55" 4500:1 65" 4500:1 76" 4500:1 86" 4500:1
Dynamic Contrast Ratio	55" 5000:1 65" 5000:1 75" 5000:1 86" 5000:1
Glass Hardness	AG Tempered Glass - Mohs Level 7
NEW Glass Type	Low Parallax Zero Bonding - Heat tempered - Anti Glare - Super Glide Surface
NEW Main Board	9950 MTK (MStar)
Life of Screen	50,000 hours

Interactivity

Writing Technology	High Precision IR Technology
Continuous Touch Points	20
Touch Resolution	32768x32768
Response Time	<5ms
NEW Touch Accuracy	1mm
Minimum Object Size	3mm
Touch Tool	Finger, Gesture, Passive Infrared pen
Simultaneous Writing	Yes
Ink in Tools	Yes - LYNX
Pens Included	2
Pen Type	Dual Recognition Stylus
Pen Holder	Integrated Full-length Pen Tray
Pen Tip Diameter	3mm/7mm
Pen & Touch Differentiation	Yes
Pen Identities	2
Palm Rejection	Yes
Annotation Over Any Source	Yes
Classroom Essential Apps	Includes Whiteboard, Annotate, Timer, Media Players, Browser, PDF Reader, Screen Record, Spinner, Voting, Maths Tools
Compatibility	Windows 10, Linux, Mac, Android, Chrome
Tracking Rate	6m/s
Scan Rate	200Hz
Gesture & Edge Swipes	Windows Supported, OSX with additional Driver

© 2021 Clevertouch. All rights reserved. Sahara Presentations Systems PLC is the owner of a number of trademarks across the world including but not limited to Clevertouch, the Clevertouch logo, UX Pro, IMPACT™, IMPACT Plus™, LUX, Lynx, CleverMessage, Cleverstore and CleverShare. All third-party trademarks (including logos and icons) referenced by Clevertouch remain the property of their respective owners. Unless specifically identified as such, Clevertouch's use of third-party trademarks does not indicate any relationship, sponsorship, or endorsement between Clevertouch and the owners of these trademarks. Applicable Terms and Conditions for warranty and support available at clevertouch.com/about/warranty. All weights and dimensions are approximate. Product specifications are subject to change without notice. Clevertouch.com.

Connectivity

OPS Slot	1 - Intel® spec 80Pin
HDMI In	3
HDMI Out	1
USB-A 2.0	1 (1 USB for system upgrade)
USB Touch (type B)	2
NEW USB A.3.0 (Easter Data Transfer)	4
NEW USB C	1x USB-C with video, audio, touch, power and hardware optimization and ethernet - front-mounted 1x USB-C with video, audio, touch, power and hardware optimization - side-mounted 1 (Supports 65W Charging)
LAN In (RJ45)	1
NEW LAN Out (RJ45)	1
RS-232	Yes
Wake-on-Lan	Yes
NEW Wireless Adapter	Upgraded 2.0 + WAP
NEW Bluetooth	Yes - 5.0
VGA In	1
Audio In	1 (3.5mm)
Optical Out	1 (Coax)
Headphone	1 (3.5mm)
Total touch out ports	2
NFC Reader / Writer	Optional Extra
Camera	Optional Extra
Proximity Sensor	Yes
WiFi	IEEE 802.11a/b/g/n/ac with 2 x 2 MIMO (hotspot only) (both 2.4 and 5 GHz bands)
WiFi Speed	Capable of speeds up to 433Mbps

Computing

NEW Operating System	Android 9
NEW System Version	LUX 9
NEW RAM	6GB
NEW Internal Storage	64GB
NEW CPU	Quad Core A73
NEW GPU	Mali G52MC2
Android Resolution	4K
Integrated LUX UI	Yes

Audio

Dual Front Facing, Bass Enhanced Speakers	2 x 15 Watt Speakers + 15 Watt Subwoofer
Audio Out	Yes
SPDIF / Fibre	Yes
Sound Channel	2.1
NEW Line Array Microphone 6	Yes - Omni-directional up to 8 meters
Super Wide Sound	Yes

Power

Power Requirements	100 - 240 - 50/60Hz 3.5A
Power Consumption (Normal)	55" 102W 65" 117W 75" 145W 86" 168W
Power Consumption (Standby)	< 0.5 Watts
Ultra Quiet Fanless Design	Yes

Operating & Storage Environment

Operating Temperature	0° to 40°
Storage Temperature	-20° to 60°
Operating Humidity	10% to 90% RH
Storage Humidity	10% to 90% RH
Altitude	Below 5000 metres

Physical Specifications

Panel Dimensions	55" 1262x794x89mm 65" 1488x920x90mm 76" 1709x1043x89mm 86" 1957x1182x86mm
Packed Dimensions	55" 1428x220x902mm 65" 1628x208x1024mm 75" 1860x280x1163mm 86" 2112x280x1304mm

Net Weight	55" 27.7kg 65" 37.3kg 75" 51.1kg 86" 63.9kg
Packed Weight	55" 33.9kg 65" 45.7kg 75" 63.9kg 86" 78.9kg
VESA Mount Point	55" 400x200mm 65" 400x200mm 75" 800x400mm 86" 800x600mm

Warranty

Warranty term and upgrade options vary by region. Contact your local reseller or distributor for information and visit clevertouch.com/about/warranty

Compliance & Certification

Regulatory Certification CE, FCC, UL, Energy Star & EEC



UX Pro Built-in Features

LYNX™ App With Online Lesson Planning	Yes
Embedded Digital Signage	Yes
CleverShare™ Mirroring Any Device To The Board	Free for the life of the screen (touch back)
Integrated Personalised Accounts Profiles	Yes
Cloud Account Access	OneDrive Google Drive
Embedded Room Booking	Yes
Whiteboard Annotation	Yes
Email Out Direct From Touchscreen	Yes
Scan QR Code For Saving Work	Yes
CleverMessage™ - Instant Alert Messaging	Yes
Over-the-Air Updates	Yes
Remote Management Of Touchscreens (MDM)	Yes - Five year license

Packed Contents - Inside your Clevertouch Box

- Whats in The Box**
- (1) Clevertouch UX Pro
 - (1) 1.5M Length HDMI Cable
 - (2) 1.5M USB Cable (A-B)
 - (1) 3M USB-C Cable
 - (1) 3M Regional Power Cable
 - (1) 1.5W 3.5mm Audio Cable
 - (1) Remote Control
 - (2) Batteries for Remote Control
 - (2) Dual Recognition Stylus
 - (1) User Guide
 - (1) Quick Install Guide
 - (1) Wireless Adapter 2.0 + WAP

Installation

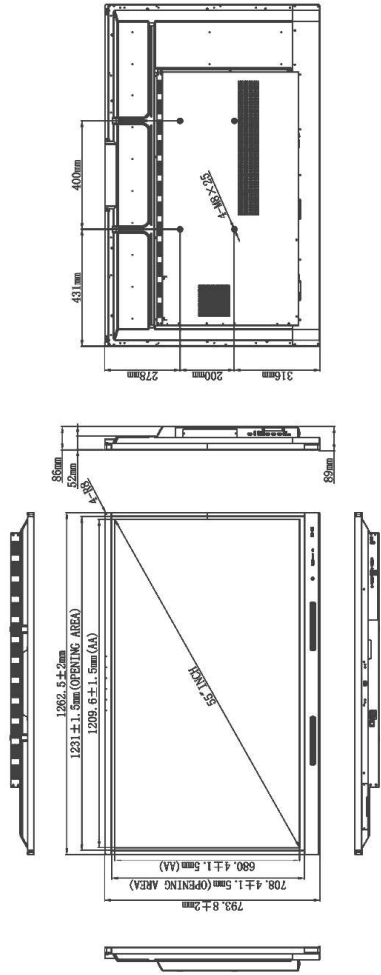
The installation of this product should be completed by a qualified installer. Use of components not supplied by Clevertouch or not meeting minimum specifications may impact performance, safety and warranty. For more information, visit clevertouch.com

Support

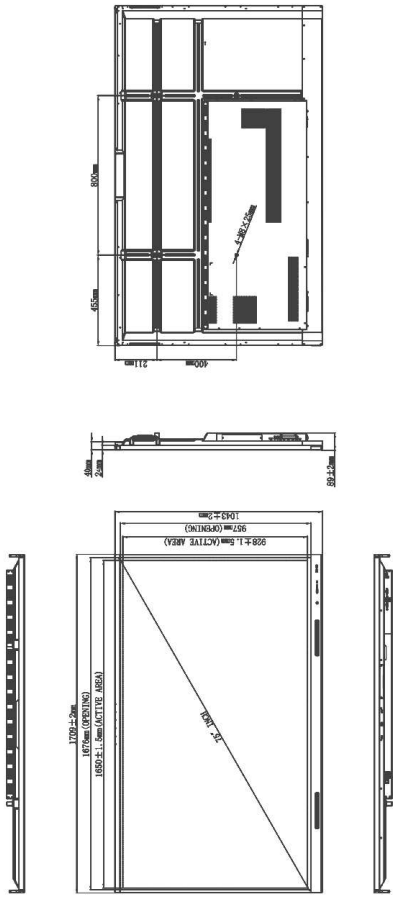
For all Clevertouch products, visit: support.clevertouch.com

© 2021 Clevertouch. All rights reserved. Sahara Presentations Systems PLC is the owner of a number of trademarks across the world including but not limited to Clevertouch, the Clevertouch logo, UX Pro, IMPACT™, IMPACT Plus™, LUX, Lynx, CleverMessage, Cleverstore and CleverShare. All third-party trademarks (including logos and icons) referenced by Clevertouch remain the property of their respective owners. Unless specifically identified as such, Clevertouch's use of third-party trademarks does not indicate any relationship, sponsorship, or endorsement between Clevertouch and the owners of these trademarks. Applicable Terms and Conditions for warranty and support available at clevertouch.com/about/warranty. All weights and dimensions are approximate. Product specifications are subject to change without notice. Clevertouch.com.

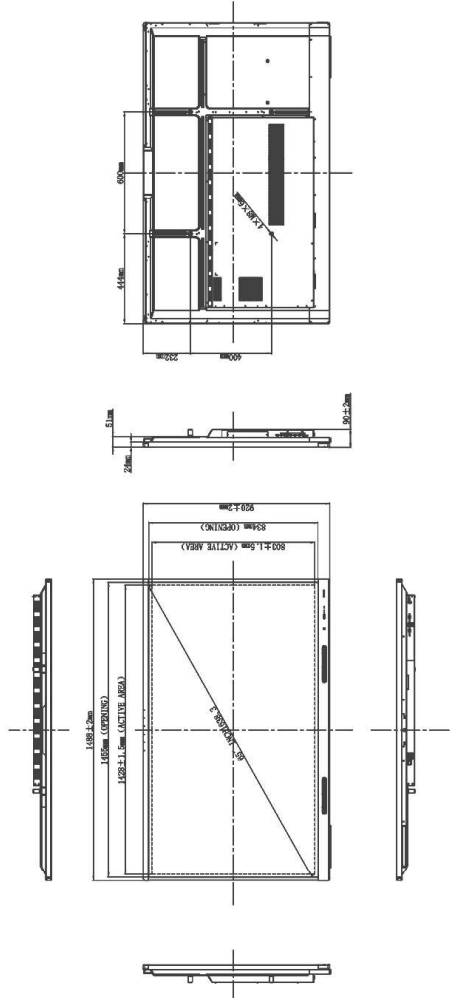
55"



75"



65"



86"

