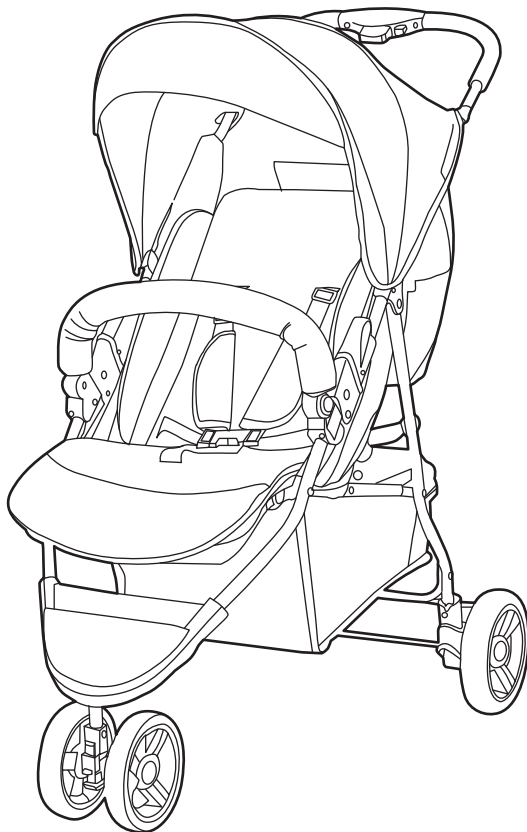


**IMPORTANT! KEEP THIS USER'S MANUAL IN A SAFE PLACE FOR
FUTURE REFERENCE!**

INSTRUCTION MANUAL FOR BABY STROLLER "NOBY"

NOBY



This stroller **chipolino** has been manufactured in accordance with the Product Safety Directive 2001/95/EU of the European Parliament and The Council and with European standard EN 1888 "Child care articles. Wheeled child conveyances. Safety requirements and test methods" and the regulations of national law, including Consumer Protection Law.

ATTENTION! YOUR CHILD WILL BE MOST SECURE IF YOU FOLLOW THE INSTRUCTIONS AND RECOMMENDATIONS GIVEN IN THIS USER'S MANUAL!

WARNING! INSTRUCTIONS AND WARNINGS FOR SAFETY!

- NEVER LEAVE YOUR CHILD UNATTENDED!
- THE SEAT UNIT OF THIS STROLLER IS NOT SUITABLE FOR CHILDREN AGED LESS THAN 6 MONTHS!
- ALWAYS USE SAFETY BELTS!
- DO NOT LIFT THE STROLLER BY THE FRONT BAR, BECAUSE THIS CAN LEAD TO SERIOUS INJURIES!
- MAKE SURE ALL LOCKING DEVICES ARE ENGAGED BEFORE USE THE STROLLER.
- BEFORE USAGE CHECK THE FIXING STABILITY OF ALL PARTS!
- MAKE SURE THE CHILD IS IN SAFE PLACE AWAY FROM THE STROLLER WHEN YOU MAKE ADJUSTMENTS, FOLDING OR UNFOLDING OF THE STROLLER.
- DO NOT ALLOW YOUR CHILD TO USE STROLLER AS A TOY!
- THE STROLLER IS NOT SUITABLE FOR RUNNING OR SKATING!
- KEEP AWAY FROM FIRE!
- Use the stroller for a child weighing not more than 15 kg.
- Initial assembly, folding and unfolding to be done only by adult!
- Do not put additional pads in the seat or on backrest!
- Always engage the brakes when the stroller has stopped and is not moving, especially when you place or take out your child from it!
- Make sure the safety belts are fastened and fit well to the child before usage.
- The maximum load for the storage basket is 2 kg.
- Do not overload the stroller! Always balance your stroller in a way to keep it stable and prevent the risk of tip-over!
- Stroller is intended for use for one child at a time!
- Do not use any spare parts or other components, which are not approved by the producer! The producer does not take any responsibility for the safety of the child when you have not used the proper and original spare parts, approved and provided by him!
- Do not apply any changes or modifications to the stroller's construction! Contact the dealer or an authorized repair service for advice and/or repair instead!
- Discontinue the usage, if you find worn out or loose joints, damaged or missing parts! There is a risk of injury of the child!
- Do not allow children younger than 3 years near the stroller during the assembly or disassembly, in order to prevent the risk of injury or swallowing of small parts!
- Strings can cause strangulation! Do not place additional strings to the product to avoid injuries!
- Never use the stroller on stairs or escalators! Use extra care when going up or down a pavement or step!
- The packaging of the product must be kept out of the reach of children to avoid the risk of strangulation!



MAIN FEATURES

- Stroller is suitable for one child aged 6+ months, weighting not more than 15 kg.
- 5-point safety harness system
- Adjustable backrest
- Adjustable canopy
- Adjustable leg rest

MAIN PARTS



- | | |
|--|-------------------------------------|
| 1 Canopy | 8 Front double wheel |
| 2 Soft mattress | 9 Handle |
| 3 Fixing after folding | 10 Mechanism to adjust the backrest |
| 4 Safety belt | 11 Front bumper |
| 5 Leg rest | 12 Storage basket |
| 6 Foot rest | 13 Parking device |
| 7 Swivel/ straight motion of the wheel | 14 Rear wheels |

Please, check if all described parts are available:



- 1 - Frame of stroller together with seat and canopy – 1pc
- 2 - Front bumper – 1 pc
- 3 - Rear axle with parking device – 1 pc
- 4 - Front double wheel – 1 pc
- 5 - Rear wheels – 2 pcs

ASSEMBLY INSTRUCTION AND FUNCTIONS

This stroller is supplied partially assembled. In order to complete the assembly, you don't need any tools.

ATTENTION! Follow exactly the instructions given and check the pictures.

ATTENTION! After each operation, make sure that you have followed the instructions correctly and the fixing is stable.

ATTENTION! Properly fixing is often accompanied with click sound.

Assembly and functions are given in figures 1-14. Use all descriptions below together with figures with the same number.

1 OPEN THE STROLLER

2 INSERT OF FRONT DOUBLE WHEEL

CAUTION! Before insert the front double wheel, make sure the locking clamp is well fixed to the mechanism of the front wheel assembly to the frame (fig. 2-1).

3 REMOVAL OF FRONT DOUBLE WHEEL

4 INSERT AND REMOVE THE REAR AXLE

5 INSERT AND REMOVE THE REAR WHEELS

6 FRONT BUMPER ASSEMBLY

7 RESTRAINT SYSTEM (SAFETY HARNESSES)

Note: The harness must fit well the baby and must not be twisted.

IMPORTANT!

Regularly check if safety harnesses are fixed to stroller and well fastened!

Safety harnesses must not be worn out or torn and buckles must be strong, without any damages and provide secure connection.

8 CANOPY

9 PARKING DEVICE

10 SWIVELING AND STRAIGHT MOTION OF FRONT DOUBLE WHEEL

Note: When you use the stroller on uneven surfaces, fix the front double wheel.

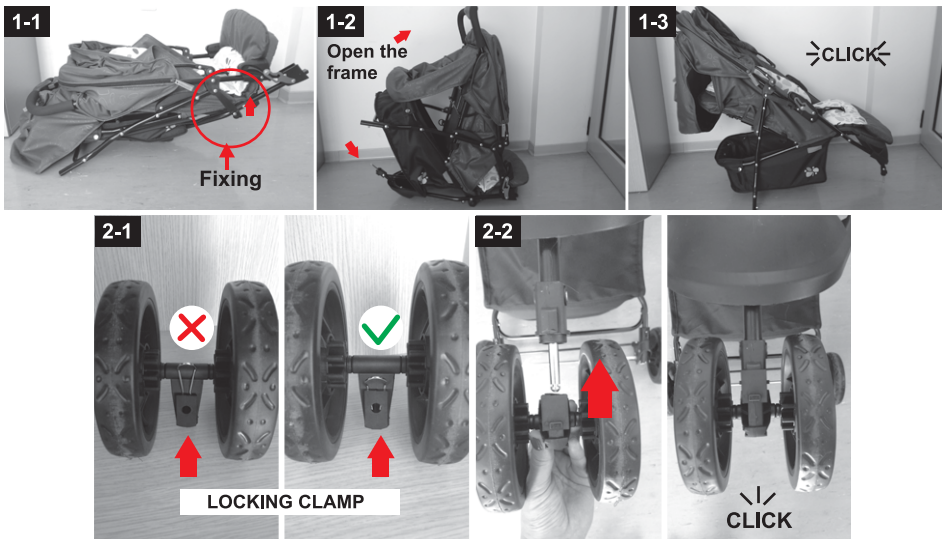
11 BACKREST ADJUSTMENT

12 FRONT BUMPER ADJUSTMENT

13 LEG REST

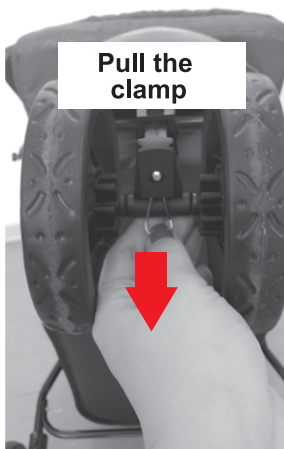
14 FOLDING OF STROLLER

IMPORTANT! Always apply the parking devices before folding the stroller. First fold the canopy, empty the storage basket and adjust the backrest in upright position and the front bumper in lowest position.



3

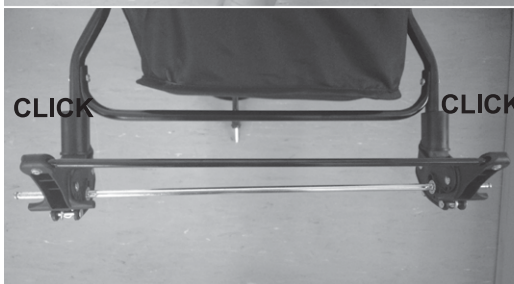
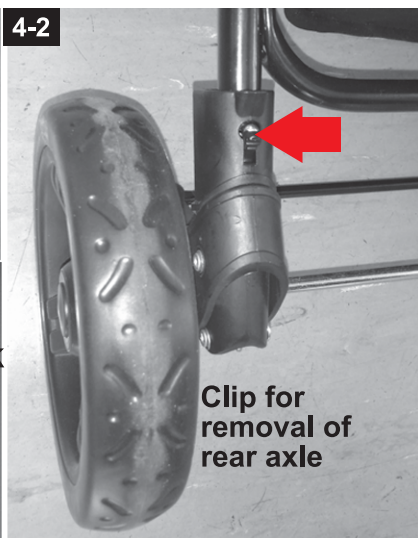
view from BELOW



4-1



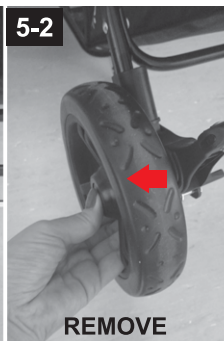
4-2



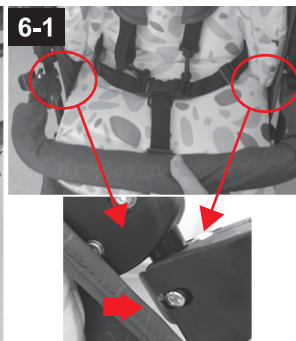
5-1



5-2

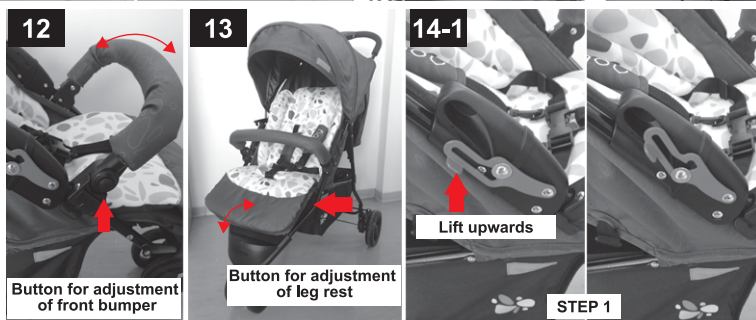
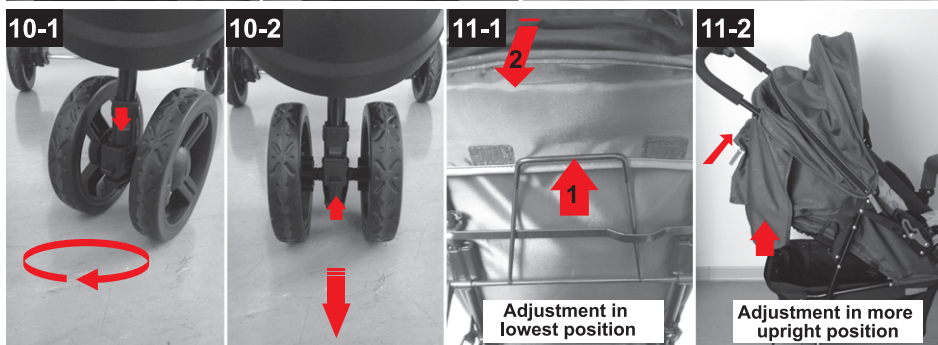
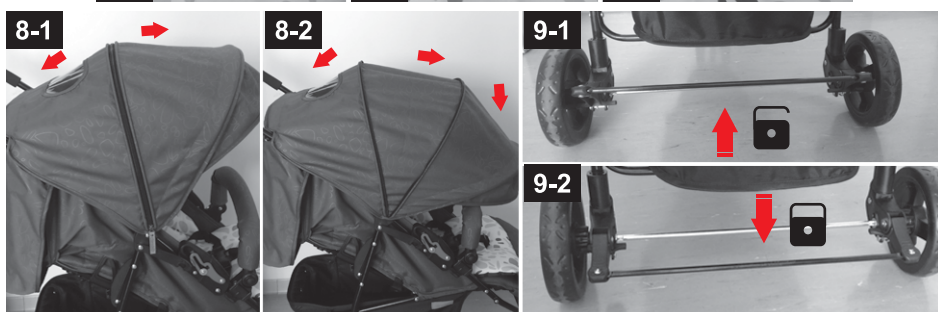
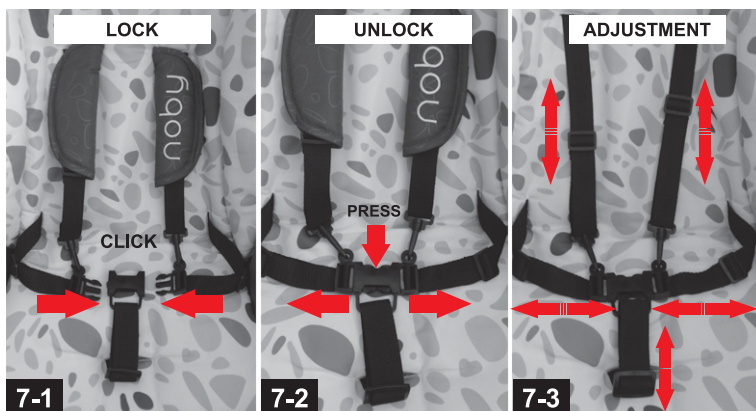


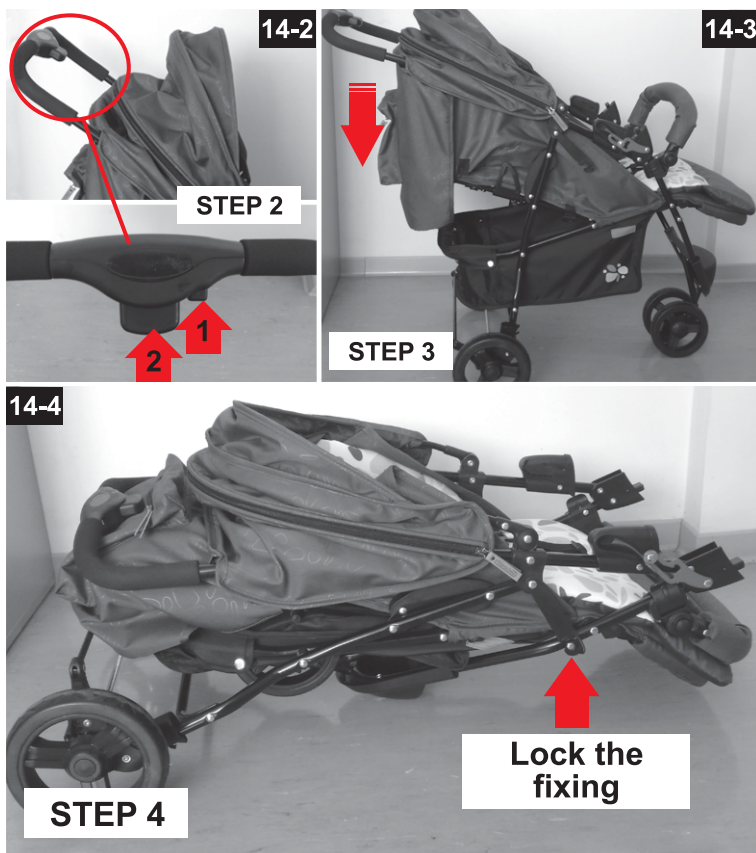
6-1



6-2







CARE AND MAINTENANCE

- The brakes and wheels wear out faster than other parts. Replace them when necessary.
- Regularly oil the moving parts. Use silicone oil or silicone spray for oiling.
- Dirt could make difficult the function of your stroller. Clean and oil all dirty metal and plastic parts regularly.
- Clean the fabrics, plastic parts and metal parts with damp cotton cloth or sponge and mild soap.
- Do not use abrasive, bleach or other aggressive detergents.
- Always after cleaning leave the stroller fully dry and after that use it or store it. It may appear mold to your stroller if you keep it moist.
- Always store your stroller indoors in clean and dry place. Do not expose to direct environment influence - sun, rain, moisture and high temperature intervals.
- Please, contact your authorized dealer for problems connected with the use or repair of this stroller.

Fabric Composition:

Outer: 100% Polyester

Filling: 100% Polyester



Materials used: plastic, textile, metal.

LKNB01xxxxx



1 Goliamokonarsko shosse, Plovdiv, BULGARIA
www.chipolino.com