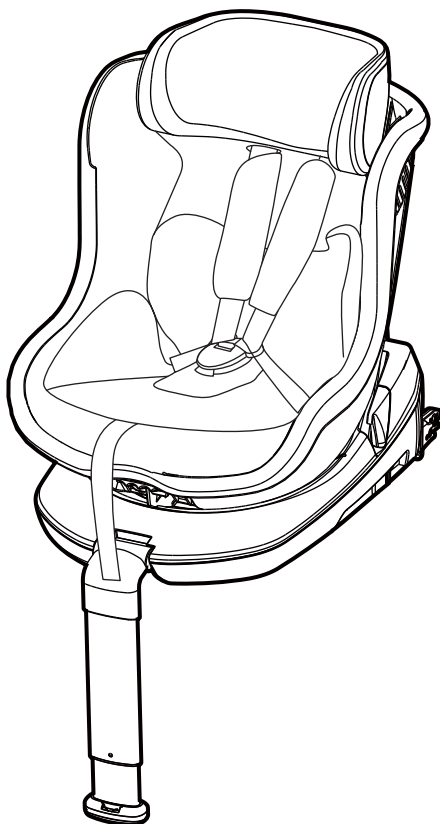


IMPORTANT! KEEP THIS MANUAL FOR FUTURE REFERENCE

**INSTRUCTION MANUAL
FOR USE OF CAR SEAT "TOLEDO"**

**CAR SEAT
TOLEDO**



This child restraint system **chipolino** is designed and manufactured in compliance with the requirements of Regulation 44 of the United Nations Economic Commission for Europe concerning the safe transportation of children, the provisions of the product safety directive 2001/95/EU of the European Parliament and The Council and Directive 91/671/EEC "Compulsory use of seat belts and child restraints systems for child occupants of power driven vehicles" of the European Parliament and The Council.

NOTICE

FOR GROUP 0+ (0-13kg) and GROUP I (9-18kg)

1. This is a "SEMI UNIVERSAL" INTEGRAL ISO FIX CHILD RESTRAINT SYSTEM. It is approved (№E4-44R-0442447) to Regulation No 44, series 04 for general use in vehicles equipped with ISOFIX.
2. This system is fitted for installation on seats with ISOFIX anchor points (described in the vehicle's handbook), depending on the system category and way of installation.
3. The weight groups and ISOFIX class, for which this restraint system is intended are GROUP 0+ (0-13 kg), GROUP I (9-18 kg) and class B1 and D.
4. Seat positions in other cars may also be suitable to accept this child restraint.

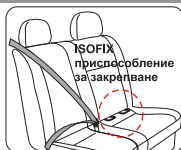


DO NOT FORGET THAT NO RESTRAINT SYSTEM CAN PROVIDE ABSOLUTE PROTECTION IN CASE OF A CRASH OR ROAD ACCIDENT! DRIVE WITH CARE WHEN THERE IS A CHILD IN YOUR VEHICLE!

IN ORDER TO ENSURE THE SAFETY OF YOUR CHILD, FOLLOW EXACTLY THE INSTRUCTIONS AND SAFETY RECOMMENDATIONS IN THIS MANUAL!

MISUSE OF THE CAR SEAT WILL CONTRIBUTE TO REDUCING ITS SECURITY AND SAFETY FEATURES! FAILURE OF THE GUIDELINES OF THIS INSTRUCTION INCREASES THE RISK OF SERIOUS INJURY OR DEATH!

PLACE OF THE CAR SEAT IN THE VEHICLE



IMPORTANT! This restraint system is intended for use only in vehicles equipped with ISOFIX anchorages, complying with the requirements of Directive № 14 of ECE regarding the approval of vehicles in regards with the safety belts, child restraints ISOFIX systems and upper band ISOFIX systems and the passenger seats compatible with i-Size standard.

CAUTION! Do not place the restraint system "REARWARD FACING" on a seat equipped with air bag! This may result in death or serious injury! Review the instructions of the car seat for information about airbags and conditions of transportation of children.



1 Never use in REARWARD facing position on passenger seats equipped with air bag which cannot be deactivated.

2 To be used ONLY on passenger seats equipped with ISOFIX.

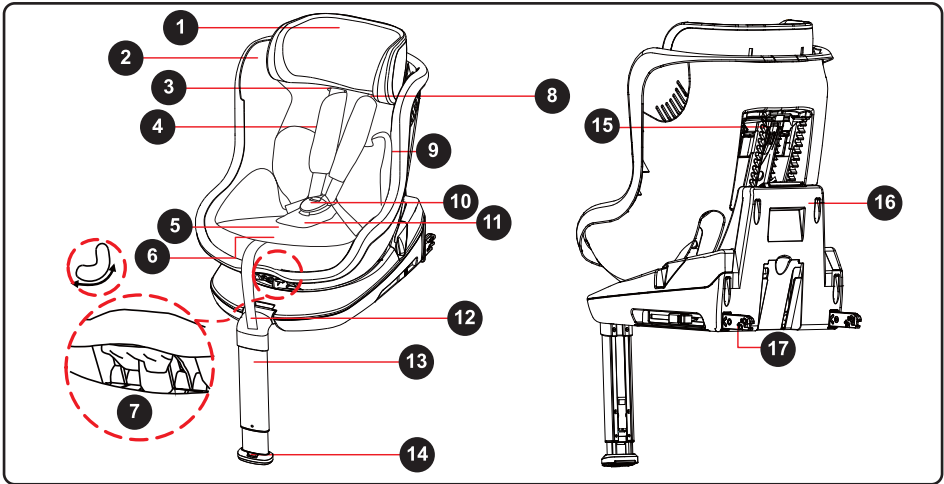
- **CAUTION!** NEVER LEAVE YOUR CHILD UNATTENDED!
- **CAUTION!** THE CAR SEAT MUST BE INSTALLED ONLY ACCORDING TO THE DESCRIBED INSTRUCTIONS IN THIS MANUAL. IT IS DANGEROUS TO USE ANCHOR POINTS OTHER THAN THE ONES GIVEN IN THIS MANUAL!
- **CAUTION!** DO NOT INSTALL THE CAR SEAT IN FORWARD FACING POSITION BEFORE THE CHILD REACHES 9 KG!
- **CAUTION!** THE SEAT SAFETY BELTS MUST BE PROPERLY ADJUSTED ACCORDING TO CHILD'S HEIGHT, NOT TWISTED AND SNUG WELL AGAINST BABY'S BODY.
- **CAUTION!** THIS CHILD RESTRAINT SHOULD NOT BE MODIFIED OR ADAPTED WITH NEW FITTINGS, WITHOUT PREVIOUS AUTHORIZATION BY THE COMPETENT AUTHORITY.
- **CAUTION!** KEEP AWAY FROM FIRE!
- Installation in the vehicle and securing the child in the car seat to be done only by adult!
- The hard parts and the parts of the child restraint made of plastic should be located and installed so that when the vehicle is in normal use, they can not be trapped by a sliding seat or in a door of the vehicle.
- Do not allow the safety belts of the car seat and the vehicle to be twisted, frayed or torn, latches and locks (buckles) must be always in good order and firmly fixed.
- If you find uncertainty or defect in the construction, latches, straps or locking mechanisms of the car seat, discontinue usage until removal of the damaged parts and replacement with new ones.
- After a violent impact the car seat and belts may be damaged, therefore, it is recommended to replace the car seat with new one.
- Never use a second hand child restraint, it may have suffered structural damage, which may make the child restraint extremely dangerous.
- Do not use this car seat without its seat cover and do not replace it with a new one, unless supplied by the manufacturer. The fabric parts are integral parts of the restraint system and its safety features!
- Always make sure that you are not carrying any unsecured objects, especially on the back shelf, which, in case of an accident, may injure the car's occupants.
- Do not put additional pads except the ones supplied from the manufacturer! Placing additional pads may obscure the safety of your child.
- Do not use spare parts and other components not supplied by the manufacturer. The manufacturer assumes no responsibility for safety in the event that are used spare parts other than original.
- It is recommended to cover the car seat if the vehicle is parked under strong sun shine – extreme sun exposure will make the plastic to deteriorate and the fabric to fade. Please, check that the child restraint has not become too hot before placing your child seat.
- The car seat does not replace the child's cot or bed. When a child needs a sleep, you have to place him in a suitable baby stroller, baby crib or bed.
- Do not attach objects with long cords or strings on the car seat in order to avoid danger of suffocation!
- Never place a child seat on beds, couches or similar soft surfaces!
- Do not allow children to play with the product!
- Do not remove stickers and warnings – they contain important information!
- The packaging of the product must be kept out of the reach of children at the time of and after unpacking in order to avoid the risk of strangulation!

PRODUCT FEATURES

- Semi universal" integral ISO FIX child restraint system, suitable for child weighing up to 18 kg;
- For Group 0+ (0-13 kg) install the car seat in reward facing position, the car seat "facing backwards";
- For group I (9-18 kg) install the car seat in forward facing position, the car seat "facing forwards";
- ISOFIX system;
- Car seat can rotate at 360° on the plastic base;
- Anti-rotation device (support leg) to limit the rotation in case of front impact;
- Backrest recline positions;
- Headrest height adjustment;
- Safety harness height adjustment;
- 5-point safety harness;

- Additional soft shoulder pads;
- Removable upholstery;

MAIN PARTS DIAGRAM



1	Headrest	10	Safety harness lock buckle
2	Side head protection	11	Soft crotch belt pad
3	Shoulder belts slots	12	Harness length adjuster strap
4	Shoulder belts soft pads	13	Anti-rotation device (Support leg)
5	Shoulder belts loosening button ("press")	14	Support leg indicator
6	Recline position button	15	Headrest and harness height adjuster
7	Lever for rotating the seat	16	Plastic base
8	Shoulder belts	17	ISOFIX attachment
9	Soft cushion (suitable for babies under 6 months)		

INSTRUCTION FOR USE

IMPORTANT!

- Follow exactly the instructions and safety recommendations in this manual.
- Check the security of fixing after each operation!
- **ALWAYS CHECK THE SECURITY OF FIXING OF THE SAFETY BELTS!**

1 – SAFETY HARNESS BUCKLE

2 – LOOSENING AND TIGHTENING THE HARNESS

3 – ADJUSTING THE HEADREST AND HARNESS HEIGHT

IMPORTANT: When the headrest height is changed this automatically changes the shoulder straps height.

IMPORTANT! Shoulder belts must be at child's shoulders height

4 – ANTI-ROTATION DEVICE

5 – ADJUSTING THE BACKREST RECLINE

6 – ROTATING THE SEAT AT 360° ON THE BASE

7 – INSTALLING THE SEAT ON THE VEHICLE PASSENGER SEAT.

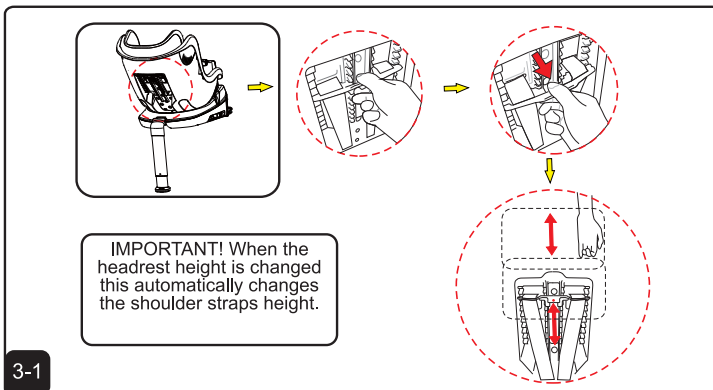
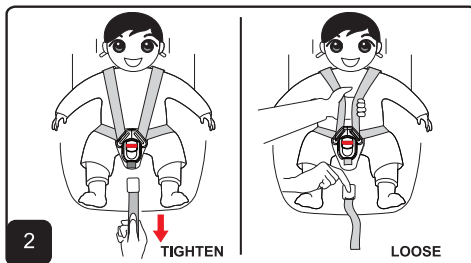
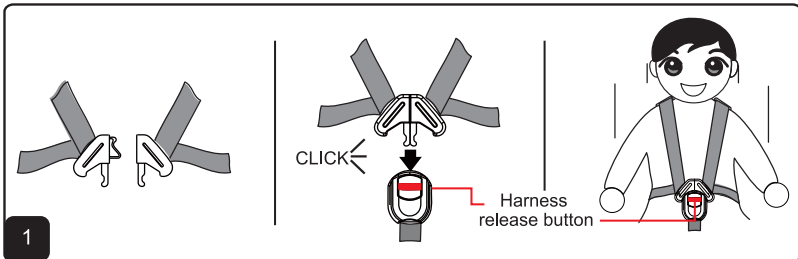
IMPORTANT! After the ISOFIX attachments are installed on the ISOFIX anchorages, along with the click sound, the release indicator must be green, which confirms the complete installation of the car seat.

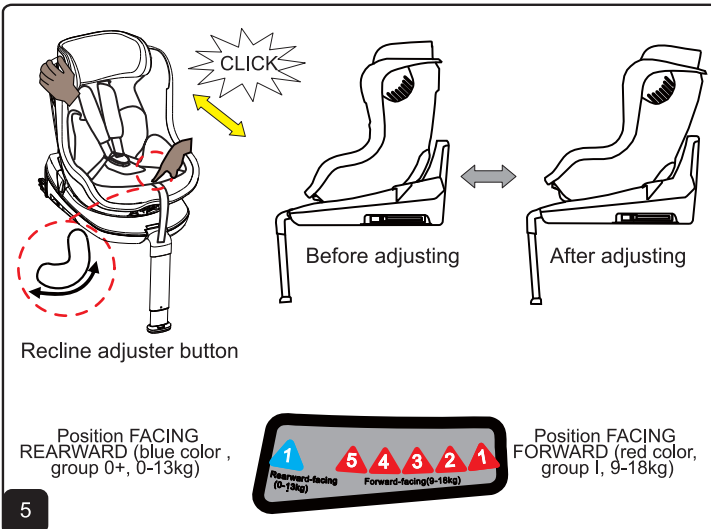
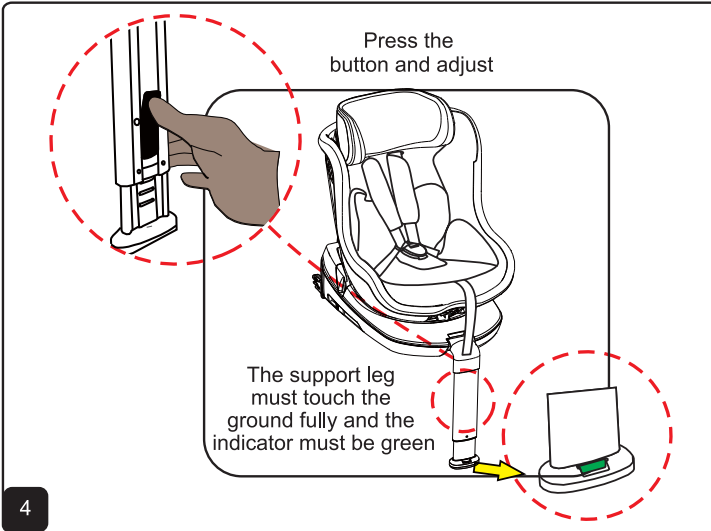
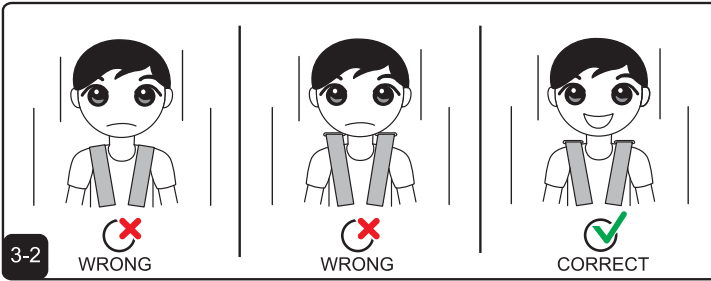
8 – USE OF THE CAR SEAT

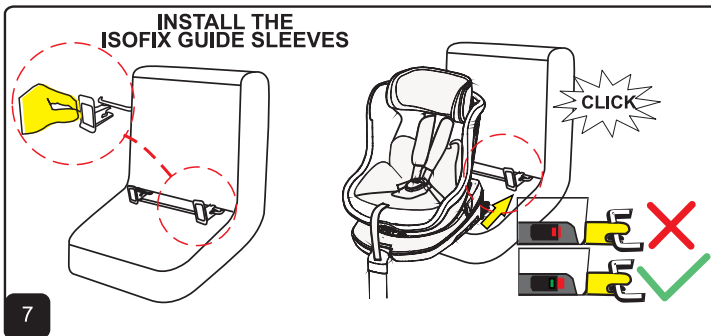
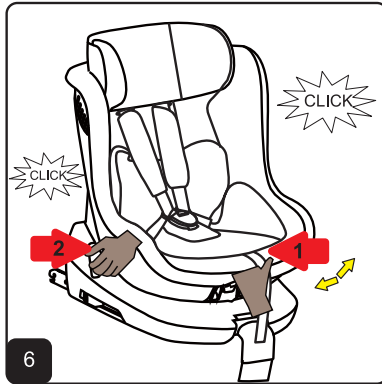
9 – PUTTING AND REMOVAL OF UPHOLSTERY

- Unfasten the shoulder pads and remove them;
- Split the shoulder belts from the join plate;
- Unlock and remove the buckle;
- Remove the upholstery.

To assemble the upholstery, repeat the above steps in reverse order.







<p>1. Release the belts (fig. 2) and place the child 2. Adjust the headrest height (fig.3) 3. Tighten the belts (fig. 2)</p>	<p>GROUP I (9-18kg)</p>	<p>GROUP 0+ (0-13kg)</p>
<p>When INSTALLING</p>	<p>When DRIVING</p>	
<p>⚠ IMPORTANT! 1. Do not leave the child in the car seat in this position during driving 2. Turn the seat to the direction shown in the corresponding weight group</p>	<p>⚠ DO NOT INSTALL THE CAR SEAT IN FORWARD FACING POSITION BEFORE THE CHILD REACHES 9 KG!</p>	

CLEANING AND MAINTENANCE INSTRUCTIONS

- Clean the plastic parts and metal parts with damp cotton cloth or sponge and mild soap.
- The upholstery and soft pads can be hand washed at 30°C with mild detergent!
- Do not tumble dry! Do not iron!
- Do not use abrasive, bleach or other aggressive detergents.
- Always after cleaning leave the car seat fully dry and after that use it or store it.
- Harnesses must be cleaned with damp cloth and mild soap!
- Do not wet or remove the stickers. They contain important information!
- Always store your car seat indoors – on dry and clean place. Do not expose to direct environment influence - sun, rain, moisture and high temperature intervals.
- Please, contact your authorized dealer for problems connected with the use or repair

Fabric:

Outer: 100% polyester

Filling: 100% polyester

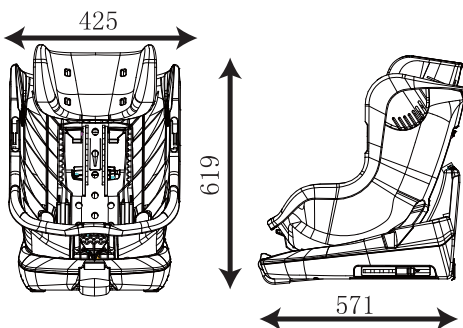


Used materials: plastic, metal, textile.

STKTO01xxxx

MAIN TECHNICAL FEATURES

- Length: 571 mm
- Width: 425 mm
- Height: 619 mm
- Weight: 9,9 kg.



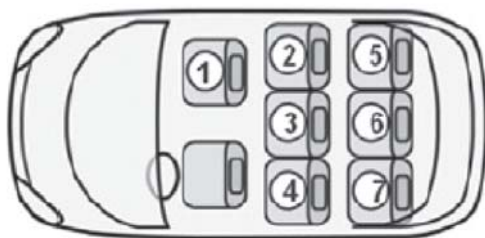
List of vehicle types with ISOFIX anchorage points
For use of semi-universal child restraint ISOFIX system

*This car seat may be appropriate to use in other vehicles with ISOFIX anchorage points

Manufacturer	Model	Year of construction	Position	Manufacturer	Model	Year of construction	Position
Alfa Romeo	147	2000-	2, 4	Audi	A1	2010+	2, 4
	156	2008+	2, 4		A2	1999+	2, 4
	GT	2004+	2, 4		A3	2004+	1, 2, 4
BMW	3er	2005+	2, 4		A3	1999+	2, 4
	3er	1995+	2, 4		A4, S4, RS4	2004+	2, 4
	6er	2003+	2, 4		A4, S4, RS4	2000+	1, 2, 4
	7er	2001+	2, 4		A4, S4, RS4	1994-2001	2, 4
	X3	2003+	2, 4		A5	2007+	1, 2, 4
	X3	2000+	2, 4		A6, S6, RS6	2004+	1, 2, 4
	X6	2008+	2, 4		A6, S6, RS6	1997+	2, 4
	Z4	2002-2008	1		A7	2010+	2, 4
Cadillac	No approved Model found for this manufacturer				A8, S8	2002-	2, 4
Chevrolet	Aveo	2006+	2, 4		Q3	2011-	2, 4
	Captiva	2006+	2, 4		Q5	2008+	1, 2, 4
	Epica	2006+	2, 4		Q7	2005+	2, 4
	HRR	2007+	2, 4		RS3	2010+	2, 4
	Kalos	2002+	2, 4		3000	2004+	2, 4
	Lacetti	2004+	2, 4	Sebring	2003+	2, 4	
	Malibu	2011+	2, 4	Voyager	2008+	2, 4, 5, 7	
	Nubira	2003+	2, 4	Voyager	2001-2007	2, 4	
	Spark	2010+	2, 4	Duster	2010+	2, 4	
	Tacuma	2000-	2, 4	Dacia	Lodgy	2012+	2, 4
Citroën	Berlingo	1999-	2, 4	Logan	2004+	2, 4	
	C-Crosser	2007-	2, 4	Sandero	2008+	2, 4	
	C2	2003+	2, 4	Copen	2002+	1	
	C3	2002-	2, 4	Cuore	2005+	2, 4	
	C4	2004+	2, 4	Materia	2006+	2, 4	
	C4 GrandPicasso	2006+	2, 4	Sirion	2005+	2, 4	
	C5	2001+	2, 4	Terios	2006+	2, 4	
	C6	2006+	2, 4	Trevis	2006+	2, 4	
	C8	2002-	2, 4, 5, 7	Daiwoo	No approved Model found for this manufacturer		
	Jumper	2007-	2, 4, 5, 7	Dodge	Avenger	2007-	2, 4
Jumpy	2006+	2, 4, 5, 7		Caliber	2006+	2, 4	
	Xsara	1999-	2, 4		Durango	2004+	2, 4
					Nitro	2007+	2, 4
Ferrari	No approved Model found for this manufacturer				Eravo	2007-	2, 4
Ford	C-MAX	2003+	2, 4		Croma	2005+	2, 4
	Fiesta	2008+	2, 4		Doblò	2010+	2, 4
	Galaxy	2006+	2, 4		Idea	2003+	2, 4
	Grand C-MAX	2010+	2, 4		Multipla	2004+	2, 4
	Ka	2009+	2, 4		Panda	2003+	2, 4
	Maverick	2001-	2, 4		Scudo	2007-	2, 4, 5, 7
	Mondeo	2000-	2, 4		Sedici	2006+	2, 4
	Ranger	2012-	2, 4		Stilo	2001-	2, 4
	S-MAX	2010+	2, 4		Ulysse	2002+	2, 4, 5, 7
	Transit	2006+	3, 4	Hummer	No approved Model found for this manufacturer		
Honda	Accord Tourer	2008+	2, 4		Accent	2006+	2, 4
	Civic	2001+	2, 4		Grandeur	2005+	2, 4
	FR-V	2005+	2, 4		i10	2008+	2, 4
	Incight	2009+	2, 4		i30	2011-	2, 4

	Jazz	2002+	2, 4	Hyundai	i40	2011+	2, 4
	Legend	2006+	2, 4		ix20	2010+	2, 4
	Stream	2000+	2, 4		ix35	2010+	2, 4
Jaguar	X-Type	2001+	2, 4		Matrix	2002+	2, 4
	XJ	2003-	2, 4	Santa Fe	2002+	2, 4	
Jeep	Cherokee	2003-	2, 4	Sonata	2001-	2, 4	
	Compass	2006+	2, 4	Terracan	2002+	2, 4	
	Patriot	2007+	2, 4	Tucson	2004+	2, 4, 5, 7	
KIA	Wrangler	2007+	2, 4	Delta	2008+	2, 4	
	Carens	2002-2005	2, 4	Lancia	2011+	2, 4, 7	
	cee'd	2005+	2, 4	Musa	2006+	2, 4	
	Cerato	2004+	2, 4	Phedra	2002+	2, 4, 5, 7	
	Magentis	2002+	2, 4	Thezis	2002+	2, 4	
	Opirus	2003-	2, 4	Ypsilon	2005+	2, 4	
	pro cee'd	2007+	2, 4	Defender	2007+	2, 4	
Maserati	Rio	2005+	2, 4	Discovery 3	2004+	2, 4	
	Sedona	2002+	2, 4	Freelander	2006+	2, 4	
	Sorento	2002+	2, 4	GS	2000+	2, 4	
	Soul	2008+	2, 4	IS	2001+	2, 4	
	Sportage	2005+	2, 4	LS	2007+	2, 4	
	Venga	2009	2, 4	RX	2003+	2, 4	
		No approved Model found for this manufacturer			323	1994+	2, 4
Mercedes-Benz	A-Klasse	2001+	2, 4	323F	2001+	2, 4	
	B-Klasse	2005+	2, 4	CX-5	2011+	2, 4	
	C-Klasse	2001+	2, 4	CX-7	2007+	2, 4	
	CLDSportcoup	2008+	2, 4	Mazda3	2003+	2, 4	
	CLK	2002+	2, 4	Mazda5	2005+	2, 4	
	CLS	2004+	2, 4	Mazda6	2002+	2, 4	
	E-Klasse	2002+	2, 4	MPV	1999+	2, 4	
	GL-Klasse	2006+	2, 4	MX-5	2002+	1	
	GLK	2008+	2, 4	Cooper	2006-2009	2, 4	
	M-Klasse	2001+	2, 4	MINI Clubman	2007+	2, 4	
Nissan	R-Klasse	2005+	2, 4	One	2001+	2, 4	
	S-Klasse	2002+	2, 4	ASX	2010+	2, 4	
	Sprinter	2006+	2, 4, 5, 7	Colt	2005+	2, 4	
	Vaneo	2002+	2, 3, 4	Grandis	2004+	2, 4	
	Viano	2003+	2, 4, 5, 6, 7	L200	2006+	2, 4	
	Vito	2006+	2, 3, 5, 6	Lancer	2003+	2, 4	
		Almera	2000+	2, 4	Outlander	2005+	2, 4
		Murano	2005+	2, 4	Pajero	2003+	2, 4
		Navara	2005+	2, 4	Shogun	2006+	2, 4
		Note	2006+	2, 4	Antara	2006+	2, 4
Peugeot	Pathfinder	2005+	2, 4	Astra	2004+	2, 4	
	Pixo	2009+	2, 4	Astra Caravan	1998+	2, 4	
	Primastar	2001+	2, 4	Astra Sports Tour	2009+	2, 4	
	Prisma	2002+	2, 4	Astra Twin Top	2007+	2, 4	
	Tiida	2008+	2, 4	Combo	2007+	2, 4	
	X-TRAIL	2001+	2, 4	Corso	200+	2, 4	
	107	2005+	2, 4	Insignia	2008+	2, 4	
	206 CC	2001+	1	Meriva	2002+	1, 2, 4	
	207	2006+	2, 4	Signum	2003+	1, 2, 4	
	208	2012+	2, 4	Vectra	1995-2001	1, 2, 4	
Porsche	3008	2009+	2, 4	Vivaro	2006+	3, 4	
	307	2001+	2, 4	Zafira	1999-2011	2, 4	
	307 CC	2003+	2, 4				
	308	2007+	2, 4	Pontiac	No approved Model found for this manufacturer		
	308 SW	2008+	2, 3, 4				
	4007	2007+	2, 4	Porsche	Cayenne	2003+	1, 2, 4
					Panamera	2009+	1, 2, 4
			Saab	9-3	2002+	2, 4	
				9-5	2001+	2, 4	

	407	2004+	2, 4	Seat	Alhambra	1998+	2, 4, 5, 7	
	5008	2009+	2, 3, 4		Altea	2004+	2, 4	
	508	2010+	2, 4		Aroza	1998+	2, 4	
	607	2001+	2, 4		Enzo	2009+	2, 4	
	807	2008+	2, 4		Leon	2005+	2, 4	
	807	2002+	2, 4, 5, 7		Mii	2011+	2, 4	
Renault	Clio	1999+	2, 4	Skoda	Toledo	1999+	2, 4	
	Espace	1999+	2, 3, 4, 5, 7		Citigo	2011+	2, 4	
	Fluence	2009+	2, 4		Fabia	1999+	2, 4	
	Grand Scénic	2009+	2, 3, 4		Octavia	2004+	1, 2, 4	
	Grand Scénic	2004+	1, 2, 4		Octavia	1998+	2, 4	
	Kangoo	1999+	2, 4		Roomster	2006+	2, 4	
	Laguna	2001+	2, 4		Superb	2008+	1, 2, 4	
	Mégane	1999+	2, 4		Superb	2001+	2, 4	
	Mégane CC	2003+	2, 4		Yeti	2009+	2, 4	
	Modus	2004+	2, 4		Smart	ForFour	2005+	2, 4
	Scénic	2003+	1, 2, 4			ForFour	2003-2005	1
		Trafic	2001+		2, 3, 4, 6	Suzuki	Alto	2009+
	Vel Satis	2002+	2, 4	Jimny	1998+		2, 4	
	Forester III	2008+	2, 4	Splash	2008+		2, 4	
Subaru	Impreza	2000+	2, 4	Swift	2004+		2, 4	
	Justy	2003+	2, 4	SX4	2006+		2, 4	
	Legacy	2002+	2, 4	Vitara	2002+		2, 4	
	Tribeca	2006+	2, 4	Wagon R	2002+		2, 4	
		Auris	2007+	2, 4	Volvo	C30	2006+	2, 4
	Avensis	1998-2002	2, 4	CT0		2006+	2, 4	
	Aygo	2005+	2, 4	S40		2001-2003	2, 4	
	Corolla	2002+	2, 4	S60		2000+	2, 4	
	Corolla Verso	2001+	2, 4	S80		200+	2, 4	
	iQ	2009+	2, 4	V40		2000+	2, 4	
	Land Cruiser	2002+	2, 4	V50		2004+	2, 4	
	Previa	1998+	2, 4	V60		2010+	2, 4	
	Preius	2001+	2, 4	V70		2000-2006	2, 4	
	PAV4	2000+	2, 4	XCT0		2002+	2, 4	
	Urban Cruiser	2009+	2, 4	XCP0		2003+	2, 4	
	Verso	2009+	2, 4					
	Yaris	1999+	2, 4					
	Bora	1998+	2, 4					
VW	Caddy	2000+	2, 4					
	Fox	2005+	2, 4					
	Golf	2007+	2, 4					
	Jetta	2005+	2, 4					
	Lupo	1998+	2, 4					
	New Beetle	1998+	2, 4					
	Passat	2000+	2, 4					
	Phaeton	2002+	2, 4					
	Polo	1999+	2, 4					
	Scirocco	2008+	2, 4					
	Sharan	2010+	2, 3, 4					
	Sharan	1998+	2, 4, 5, 7					
	TS	2009+	3, 4					
	TS	2003-2009	2, 4, 5, 7					
	Tiguan	2007+	2, 4					
	Touareg	2010+	2, 4					
	Touareg	2002+	1, 2, 4					
	Touaran	2003+	2, 4					
	up!	2011+	2, 4					



CHIPOLINO

1 Golyamokonarsko shosse, Plovdiv, BULGARIA
www.chipolino.com