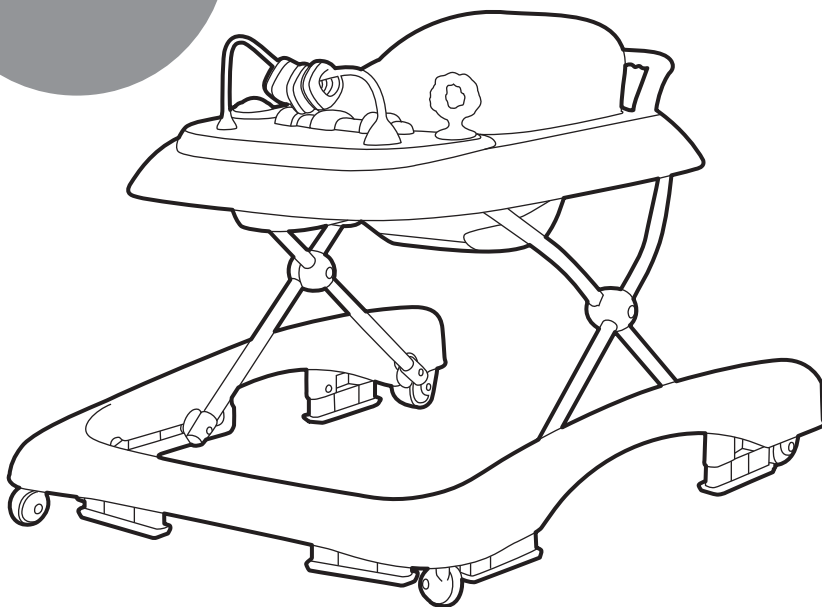


**IMPORTANT! PLEASE, READ CAREFULLY THESE INSTRUCTIONS
AND KEEP THEM IN A SAFE PLACE FOR FUTURE REFERENCE!
THE CHILD MAY GET INJURED IF YOU FAIL TO FOLLOW THE
WARNINGS AND GUIDELINES IN THIS MANUAL**

USER MANUAL FOR BABY WALKER COMFY 2 IN 1

COMFY



This **chipolino** baby walker is manufactured in accordance with the Product Safety Directive 2001/95/EU of the European Parliament and the Council, to European standard EN 1273:2005 Child use and care articles. Baby walking frames. Safety requirements and test methods as well as Consumer Protection Law from national legislation.

TO SECURE THE SAFE USE OF THIS PRODUCT, FOLLOW THE WARNINGS, GUIDELINES AND RECOMMENDATIONS IN THIS MANUAL:

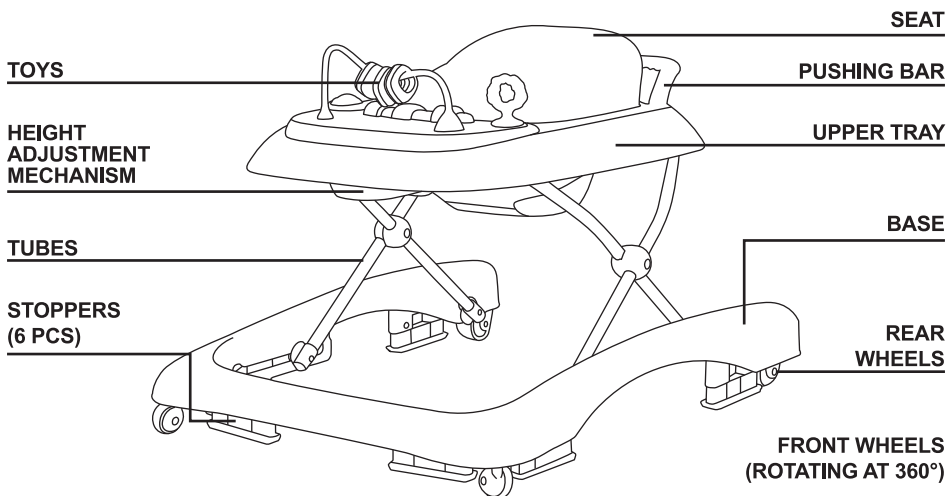
- **CAUTION!** NEVER LEAVE THE CHILD UNATTENDED!
- **CAUTION!** BABY WALKER IS NOT FOR A CHILD, WHO CAN WALK ALONE!
- **CAUTION!** BABY WALKER IS NOT FOR A CHILD, WHO IS WEIGHTING MORE THAN 12 kg!
- **CAUTION!** BABY WALKER IS NOT FOR A CHILD, WHO CANNOT SIT IN IT UNAIDED (UNDER 6 MONTHS)!
- **CAUTION!** THE CHILD CAN REACH MORE OBJECTS, MOVE FASTER AND AT BIGGER DISTANCES. TO PROTECT THE CHILD FROM INJURY:
- DO NOT ALLOW ACCESS TO STAIRS, STAIRCASES AND UNEVEN SURFACES!
- KEEP AWAY FROM FIRE, SOURCES OF HEAT, COOKING APPLIANCES!
- KEEP AWAY FROM CHILDREN HOT LIQUIDS, ELECTRIC CORDS AND OTHER DANGEROUS OBJECTS!
- AVOID COLLISION WITH DOOR GLASSES, WINDOWS AND FURNITURE.
- DO NOT USE THE BABY WALKER IF YOU FIND BROKEN, WOBBLY OR MISSING ELEMENTS.
- **CAUTION!** DO NOT ALLOW CHILDREN YOUNGER THAN 3 YEARS NEAR THE STROLLER DURING THE ASSEMBLY OR DISASSEMBLY, IN ORDER TO PREVENT THE RISK OF INJURY OR SWALLOWING OF SMALL PARTS!
- Adult assembly of the walker and its accessories is required!
- Height of the tray must be according to child's needs.
- You should use this baby walker only for short periods. Recommended duration is 20 minutes!
- When the child is in the walker, its feet must touch the floor.
- Before usage the walker must be completely unfolded and all parts must be fixed. Make sure that all locking mechanisms are engaged.
- Use the walker only at home, on even (not sloped) surface and only for its purpose!
- Do not lift or move the baby walker while there is a child in it!
- Stick or remove any loose stickers to avoid them being swallowed by small children.
- Do not use spare parts or components different from the ones supplied by the producer! The producer is not liable in case you use parts other than the original or approved by him.
- Do not make changes or modifications to the frame! If necessary, contact the retailer or an authorized service for advice and repair.
- Keep the nylon package away from children to avoid the risk of suffocation!

MAIN FEATURES

Baby walker COMFY 2 in 1 encourages the child attempts to make and refine its first steps and helps the toddler to develop its balance and coordination. Bright colors and the toys on tray stimulate the creativity of the child, develop hearing and vision.

- INTENDED FOR CHILDREN, WHO CAN SIT ALONE, ABOVE 6 MONTHS AND WEIGHT UP TO 12 kg.
- Two main functions: BABY WALKER and PUSHING TOY;
- Wide base or better stability;
- Colorful tray with toys;
- 3 height positions of the seat to match the height of the child;
- Stoppers to prevent tipping over or falling over stairs (6 pcs);
- 4 pcs wheels (front wheels rotate to 360°);
- Tray with different shaped and colored toys;

MAIN PARTS



Please, make sure that all described parts are available!



Frame of baby walker 1 pc



Front (rotatable) wheels 2 pcs
Rear (straight direction) wheels 2 pcs



Stoppers 6 pcs



Arch with toys 1 pc



Rotating toy 1 pc



Plastic backrest 1 pc



Pushing bar 1 pc



Textile seat 1 pc



Panel with toys 1 pc

ASSEMBLY

IMPORTANT! FOLLOW EXACTLY THE GUIDELINES AND SEQUENCE OF ASSEMBLY AND USE WHICH YOU WILL FIND IN THE FIGURES IN THIS MANUAL.

CAUTION! CHECK THE SECURITY OF FIXING UPON COMPLETING EACH OPERATION!

CAUTION! KEEP YOUR HANDS FROM ENTRAPMENT DURING ASSEMBLY ESPECIALLY WHEN FOLDING AND UNFOLDING THE WALKER!

NOTE: Product is supplied partially assembled. To complete the assembly you do not need to use any tools.

The assembly actions are numbered from 1 to 14. Use the descriptions below in combination with the figure of the same number.

- 1 – FRONT WHEELS ASSEMBLY
- 2 – REAR WHEELS ASSEMBLY
- 3 – STOPPERS ASSEMBLY
- 4 – OPENING THE FRAME OF BABY WALKER
- 5 – PUSHING BAR ASSEMBLY
- 6 – PLASTIC BACKREST ASSEMBLY
- 7 – TEXTILE SEAT ASSEMBLY
- 8 – TOY PANEL ASSEMBLY
- 9 – ARCH AND TOYS ASSEMBLY
- 10 – ARCH AND TOYS REMOVAL

FUNCTIONS

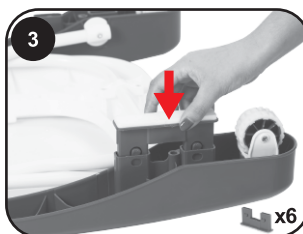
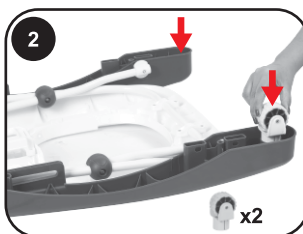
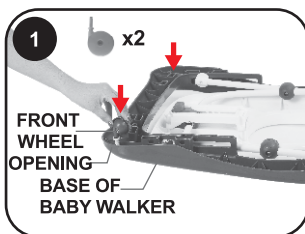
11 – HEIGHT ADJUSTMENT OF UPPER TRAY AND FOLDING

12 – FRONT ROTATABLE AT 360° WHEELS

13 – REAR STRAIGHT MOTION WHEELS

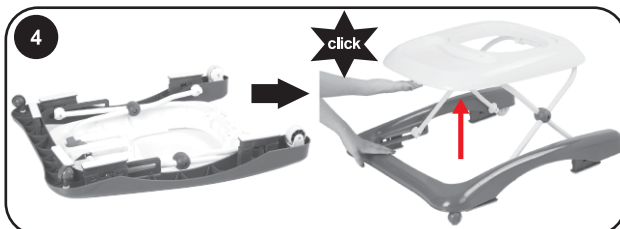
Note: Front wheels will automatically stop the baby walker if child walks too fast backwards.

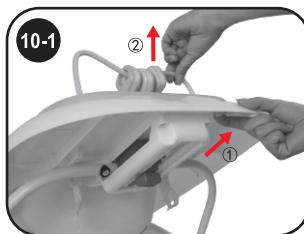
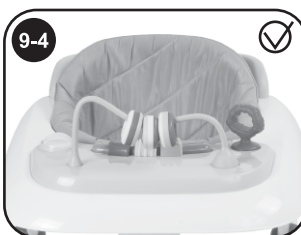
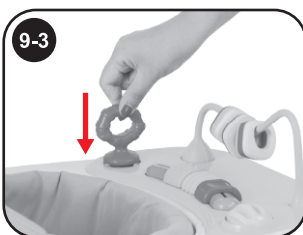
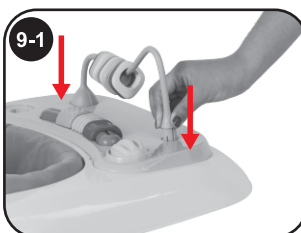
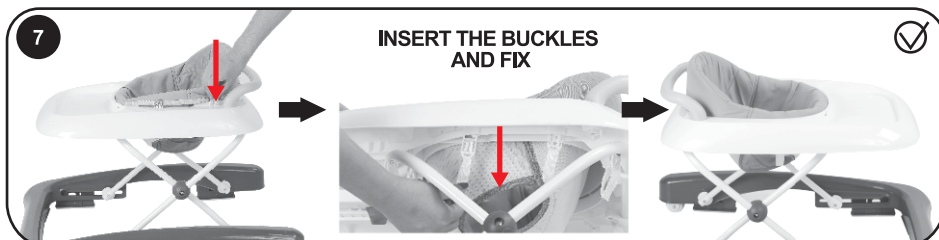
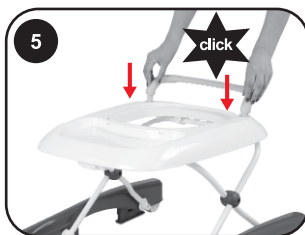
14 – BABY WALKY (PUSHING TOY)

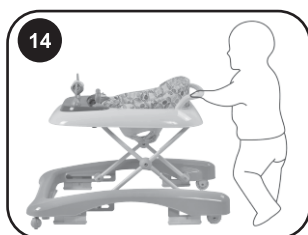
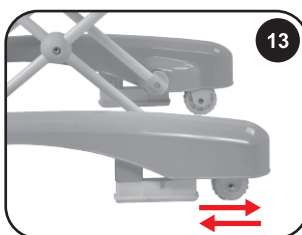
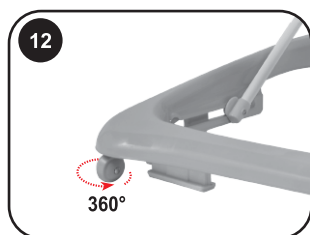
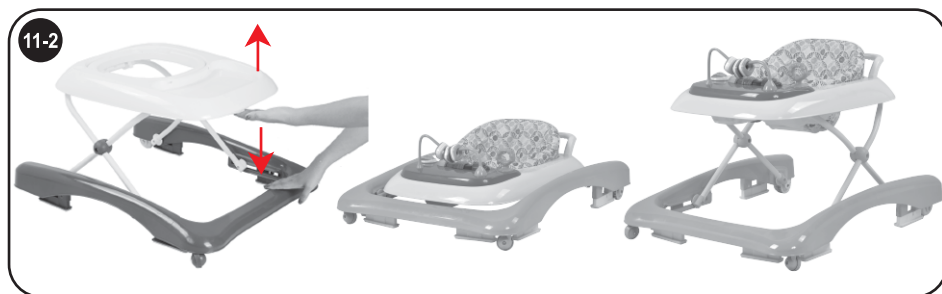
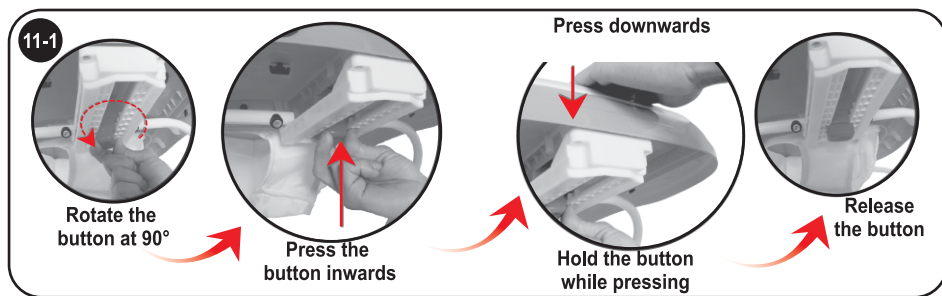


ATTENTION!

NEVER USE THE BABY WALKER WITHOUT WHEELS AND STOPPERS! INSERT THE BUCKLES AND FIX







CARE AND MAINTENANCE

- Periodically check the good working order of all parts. Any broken or damaged parts must be immediately repaired or replaced.
- Do not pour water over the walker. Clean with damp soft towel and a neutral liquid.
- Never use abrasive, bleach or spirit based detergents.
- The seat cloth can be had washed at 30°C.
- Discontinue using the walker if you find damage or non-working function.
- After each cleaning, leave the walker to fully dry and only after that use it or store it.
- Do not store in areas with hot air or close to heat sources to avoid deforming.
- Store the product in a clean and dry place. Do not leave it to environmental effects – sun, rain, moisture or harsh temperature fluctuations!
- Do not put heavy items on the walker during transportation or storing.
- In the event of problems with normal exploitation, contact an authorized service for advice or repair.

Fabric composition:

Outside: 100% polyester

Filling: 100% polyester



Materials used: plastic, metal, textile.



1 Golyamokonarsko shosse, Plovdiv, BULGARIA
www.chipolino.com