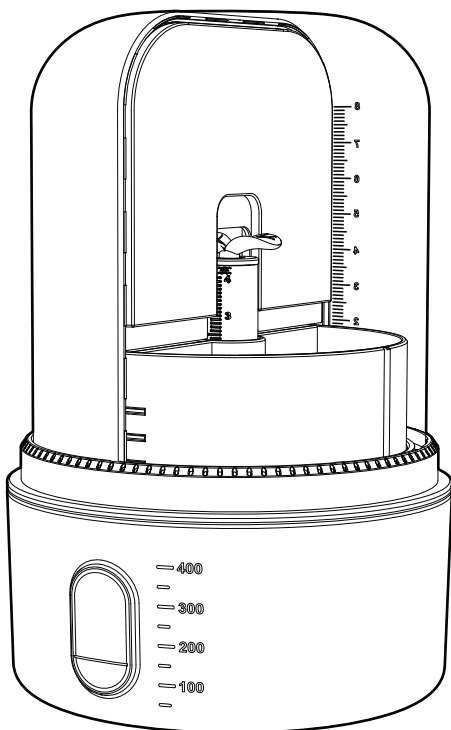




MENDEL

PLANT GROWTH STATION



STEAM

EDUCATIONAL PRODUCT



WARNING CHOKING HAZARD-SMALL PARTS,
NOT SUITABLE FOR CHILDREN UNDER 3 YEARS.



CN: 产品配件

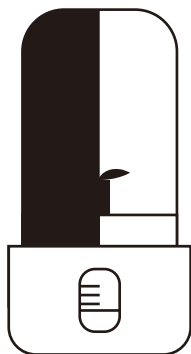
EN: Parts List

DE: Liste der Einzelteile

FR: Liste des pièces

ES: Lista de partes

IT: Elenco delle parti



x1



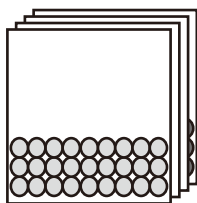
x1



x1



x1



x4



x1

CN: 使用说明

FR: Mode d'emploi

EN: Instructions of use

ES: Instrucciones de uso

DE: Gebrauchsanweisung

IT: Istruzioni per l'uso

CN: 水培功能

FR: Culture hydroponique

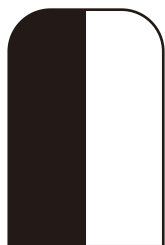
EN: Hydroculture

ES: Hidrocultivo

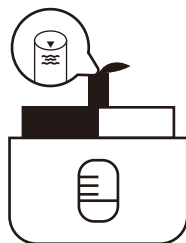
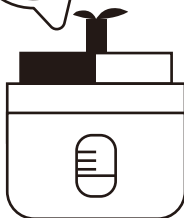
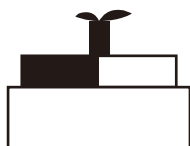
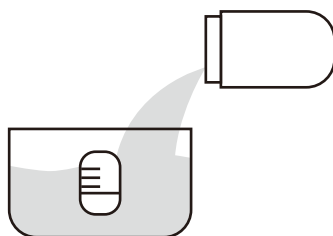
DE: Hydrokultur

IT: Idrocoltura

①



②



③

CN: 两边各加入约30颗种子,将种子放入培育皿水中泡发12小时。

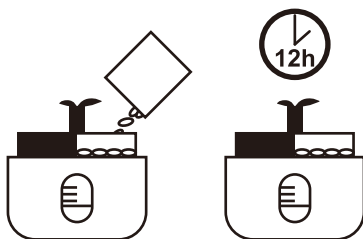
EN: Place 30 seeds on each of the two sides, let the seeds soak in water in the culture plate for 12 hours.

DE: Auf jeder Seite 30 Samen einlegen und die Samen 12 Stunden in der Kulturschale in Wasser quellen lassen.

FR: Laisse les graines reposer dans la coupelle remplie d'eau pendant 24 heures. Change l'eau 3 à 4 fois au cours de cette étape.

ES: Coloca las 30 semillas en los dos lados, deja que las semillas se ablanden en el agua del cuenco del cultivo durante 12 horas.

IT: Posizionare 30 semi su ciascuno dei due lati, quindi lasciarli in ammollo nell'acqua nel piatto di coltura per 12 ore.



④

CN: 拉伸绿叶提手使培育皿脱离水面,每天喷水两次,适当换水,盖上明暗保护罩,观察植物生长。

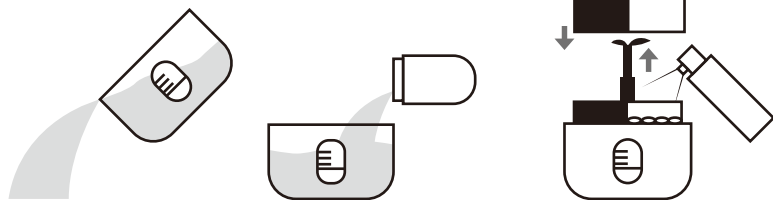
EN: Remove the culture plate from the water using the green leaf handle, spray it twice a day, exchange the water once. Cover the germ buds against light and shadow and check on the plant growth.

DE: Ziehe die Kulturschale am grünen Blattgriff aus dem Wasser, besprühe sie zweimal pro Tag. Bedecke die Keimlinge mit einer Abdeckung gegen Licht und Schatten und beobachte das Wachstum der Pflanze.

FR: Retire la coupelle de culture de l'eau par la poignée verte en forme de feuille, arrose-la deux fois par jour et change l'eau une fois. Recouvre les germes d'une protection anti-ombre et anti-lumière et observe la plante grandir.

ES: Saca el cuenco de cultivo del agua con la pinza verde, rocíalo dos veces al día y cambia el agua una vez. Cubre los brotes con una cubierta para protegerlos de la luz y la sombra, y observa el crecimiento de la planta.

IT: Estrarre il piatto di coltura dall'acqua utilizzando l'impugnatura verde a forma di foglia, spruzzarlo due volte il giorno e cambiare l'acqua una volta al giorno. Coprire le piantine per proteggerle dalla luce e dall'ombra, quindi controllarne la crescita.



CN: 土培功能

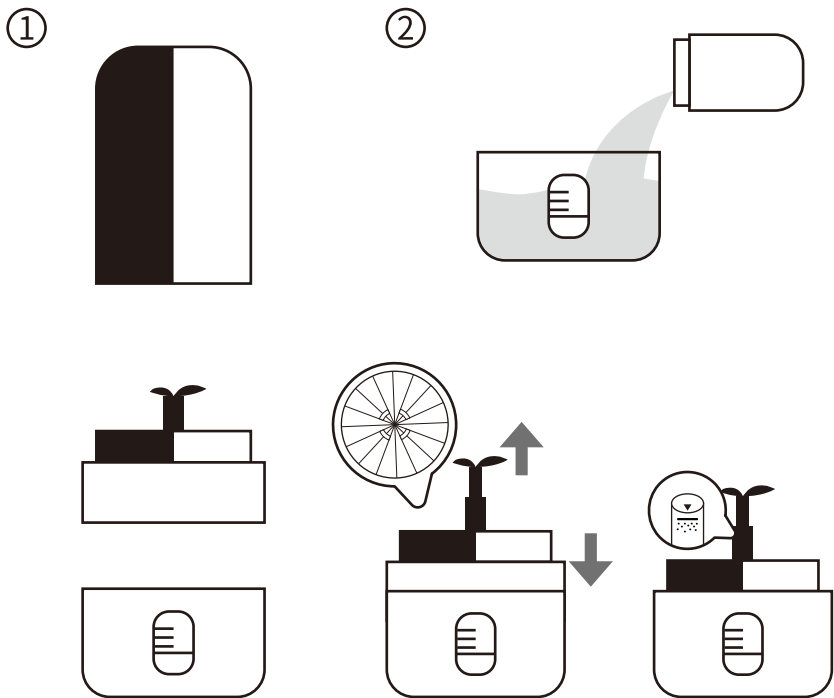
EN: Soil culture function

DE: Bodenkulturfunktion

FR: Fonction de culture en terre

ES: Función de cultivo de suelo

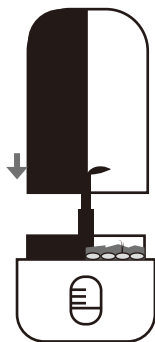
IT: Funzione di coltura del suolo



- DE:** Wie in der Abbildung dargestellt, wird ein Baumwollstreifen in die 2 Schlitz für Baumwollstreifen gesteckt, und eine Schaufel wird verwendet, um die Erde auszugraben und zu transportieren, um das Kulturgefäß damit zu füllen.
- FR:** Comme sur l'image, un morceau de coton a été inséré dans les 2 ouvertures argentées et une pelle a été utilisée pour creuser et transporter la terre afin de remplir la plaque de culture.
- ES:** Tal como se muestra en la figura, se introduce una mecha de algodón en una de las 2 aberturas para mechas, y con una pala se excava la tierra y se transporta para llenar el plato de cultivo.
- IT:** Come mostrato nella figura, inserire un pezzetto di cotone nelle 2 aperture apposite, quindi usare la pala per scavare e trasportare il terreno per riempire il piatto di coltura.

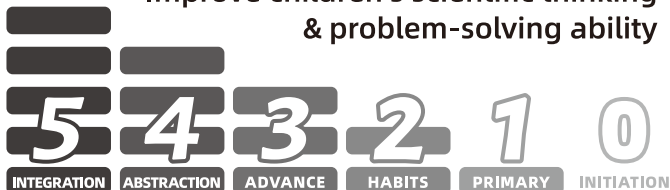
④

- CN:** 埋入种子，压实土壤，盖上明暗保护罩，观察植物的生长
(可使用绿叶提手测量植物的高度)
- EN:** Place the seeds in the soil, compact the soil and cover with a light-protection cover. Check on the plant growth (use the green leaf handle to measure the plant height).
- DE:** Bette die Samen in der Erde ein, verdichte die Erde, bedecke es mit einer Lichtschutzhülle, beobachte das Wachstum der Pflanze (verwende den grünen Blattgriff, um die Höhe der Pflanze zu messen).
- FR:** Insère les graines dans la terre, comprime-la et recouvre-la avec une enveloppe de protection contre la lumière, observe la croissance de la plante (utilise le support de feuille vert pour mesurer la hauteur de la plante).
- ES:** Entierra las semillas en la tierra, compacta la tierra, cúbre-la con una funda protectora frente a la luz, observa el crecimiento de la planta (usa la pinza verde para medir la altura de la planta).
- IT:** Introdurre i semi nella terra, compattarla e ricoprir-la con un leggero involucro di protezione, osservare la crescita della pianta (utilizzando l'impugnatura verde a foglia per misurare l'altezza della pianta).



SCIENCE CAN (HIBL) LEARNING

Improve children's scientific thinking
& problem-solving ability



**LIFE
SCIENCES**



**PHYSICAL
SCIENCES**





**GEO-
SCIENCES**



**SPACE &
TECHNOLOGY**



微信  扫码看玩法视频
畅玩攻略, 探索不一样的世界

Wechat  scan code to see the play video
How to play to explore a different world

Item No: 160006

Manufacturer: Jiangsu TopBright Wisdom Information Technology Co.Ltd TEL: +(86)0571-86879391

Address: NO.10, Wenzhou road, Economic-Technological Development Area, Shuyang county, Suqian

TOPBRIGHT ANIMATION CORPORATION

Address: 6/F, The Agriculture building, Anyang district, Ruian, Zhejiang, China

TOPBRIGHT GmbH, Brunnengasse 65, 90402 Nürnberg, Germany

Website: <http://www.topbrighttoys.com>

©2020 TOPBRIGHT ANIMATION all rights reserved. MADE IN CHINA