

# FIMO® Bead Roller – Instructions for use

ACCESSOIRES

## Artikel 8712



It's never been so easy to make same-sized, perfectly shaped beads! All you need to do to get consistent, uniform FIMO beads is to slide the base and top of the bead roller back and forth. The measuring ring helps you to measure out the quantity required for one bead.

For making 3 different bead shapes:



bicone

oval

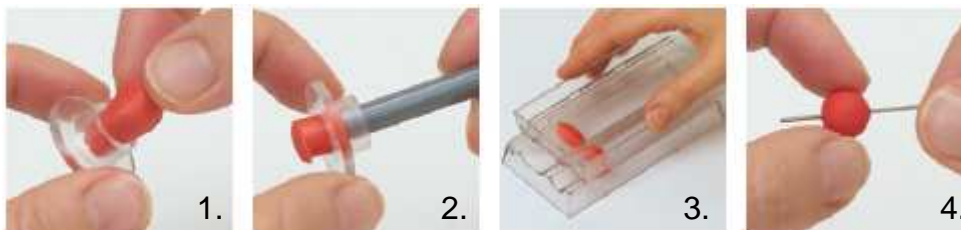
round

### This is how it's done:

1. Using the measuring ring, measure out the exact amount of FIMO required.
  2. Push the FIMO out of the ring using, e.g., the end of a pencil.
  3. Shape a small ball out of the measured-out amount and place it in the desired channel. Slide the base and top back and forth along the guiding rails.
  4. Carefully make a hole through the bead, e.g. using a needle. **ATTENTION:** Make sure that the hole is the right size for your chain.
  5. Harden the FIMO in an oven at 110°C for approx. 30 minutes.
- Your FIMO beads are now ready for stringing!

**Tip:** Lacquering the beads adds a nice touch.

**Cleaning:** When using different FIMO colours in succession, clean the shape with a damp cloth, otherwise it is possible for traces of colour to be transferred onto the following colours. After cleaning, always dry with a tea towel. Cleaning using soapy water is recommended after use. Do not use any strong chemicals or abrasive materials. Protect needles against the damp. Dry the needle using a tea towel and clean them with fine sandpaper if necessary.



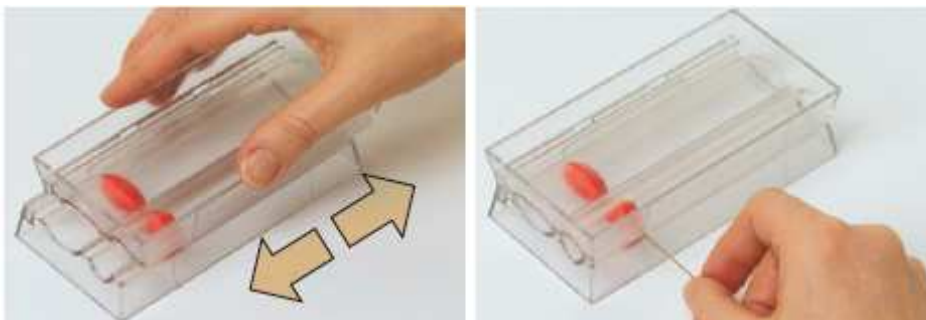
**Artikel 8712 01 / 8712 02 / 8712 04**



It's never been so easy to make same-sized, perfectly shaped beads! All you need to do to get consistent, uniform FIMO beads is to slide the base and top of the bead roller back and forth. For making 2 different bead shapes.

**This is how it's done:**

1. Measure the correct amount of FIMO out by first rolling the FIMO into a roll with a diameter of approx. 1cm. Then cut into pieces in the recommended lengths.
2. Roll the FIMO portions into little balls or olive shapes and insert them into the desired channel. Slide both of the plastic plates backwards and forwards along the guiding rails.
3. The marks on the side of the Bead Roller show the entry channels which let the enclosed needles slide through. This means that the beads can be simply and easily punctured without distorting the beads or leaving fingerprints.
4. Insert the beads into the Bead Roller in such a way that the side marks meet the middle of the bead. Carefully insert the needle through the guiding channel and through the bead. **ATTENTION:** Check that the hole has a suitable diameter to thread it onto your chain.
5. Harden the FIMO in an oven at 110°C for approx. 30 minutes. Your FIMO beads are now ready for stringing!

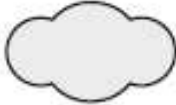







**Artikel 8712 01 / 8712 02 / 8712 04**

**TIP:** Lacquering the beads adds a nice touch.

**Cleaning:** When using different FIMO colours in succession, clean the shape with a damp cloth, otherwise it is possible for traces of colour to be transferred onto the following colours. After cleaning, always dry with a tea towel. Cleaning using soapy water is recommended after use. Do not use any strong chemicals or abrasive materials. Protect needles against the damp. Dry the needle using a tea towel and clean them with fine sandpaper if necessary.

**Cut-off length:** Measure out the necessary amount of FIMO. To do this, first of all make the FIMO into a roll with the respectively stated diameter. After this, cut this off in the recommended length.

<b><u>Roll-Thickness</u></b>	<b><u>Cut-off length</u></b>	<b><u>Bead</u></b>	<b><u>Size of the bead</u></b>
Ø 10 mm	2 mm		27 x 13 mm
Ø 10 mm	0,4 mm		Ø 9 mm
Ø 10 mm	2,5 mm		28 x 13 mm
Ø 10 mm	1,5 mm		8 x 13 mm
Ø 10 mm	1,5 mm		27 x 11 mm
Ø 10 mm	0,5 mm		Ø 10 mm

**Artikel 8712 03**



Modelling beads which are of exactly the same size and which are perfectly formed has never been so easy! By moving the top and the bottom sections back and forth, FIMO beads which are of the same size are the result. Using this clever system, 5 different sizes of bead are also possible. This set contains 4 different sections: 1 top section (A), 1 bottom section (B) and 2 middle sections (C). These middle sections can be put together in 2 different ways (refer to illustration 2+3).

**Combination 1:** Top section (A) and bottom section (B) (see illustration 1) provides the large bead (22mm).

**Combination 2:** Connecting the middle sections (C) with the bottom section (illustration 2) allows to make the bead sizes 6 mm + 13 mm.

**Combination 3:** Connecting the middle sections (C) with the bottom section (illustration 3) allows to make the bead sizes 10 mm + 16 mm.

**How it works:**

1. Measure out the amount of FIMO you need. To do this, first of all make the FIMO into a roll with a diameter of approx. 1 cm. Next, cut off sections of FIMO in the recommended lengths. So that the beads turn out ideally with this bead rolling set, it is extremely important to measure the FIMO used exactly (the beads will not be of the same size if you use too much FIMO and with too little FIMO you will not get an exact line in the middle).
2. Now roll up the different portions of FIMO into small balls and place them into the cases. Now roll the plastic shapes that you choose back and forth.
3. Now, remove your FIMO beads and pierce them through very carefully using a needle. **IMPORTANT:** Check whether the hole you make in the bead is wide enough for the bead to be threaded onto your chain.
4. Harden the FIMO in the oven for approx. 30 minutes at 110°C.  
Your FIMO beads are now ready for threading!

**Tip:** The beads gain attractive highlights if they are painted or varnished.

**Swirly patters:** If you use different coloured FIMO then you can create a unique swirly pattern. To do this, don't simply move the top section back and forth, just move it in a single direction. To ensure that the pattern works, you always have to place the bead on the opening of the bottom section without turning it.

**Artikel 8712 03**

**Cleaning:** When using different FIMO colours in succession, clean the shape with a damp cloth, otherwise it is possible for traces of colour to be transferred onto the following colours. After cleaning, always dry with a tea towel. Cleaning using soapy water is recommended after use. Do not use any strong chemicals or abrasive materials. Protect needles against the damp. Dry the pins using a tea towel and clean them with fine sandpaper if necessary.

