

Motion detector

# IS 360-1 DE

white

EAN 4007841 032845

Article number 032845



infrared sensor  
360°



max. 4 m

1000 W

1000 W max.  
(LED-ready)



IP54



2 - 2000 lux



8 sec - 35 min



ideal 2.2 m



energy saving

3 years

manufacturer's  
warranty  
[steinel.de/garantie3y](https://www.steinel.de/garantie3y)



CE

## Function description

Intelligent technology for installation. Infrared wall sensor IS 360-1 DE, for indoors and out, ideal for installing in projecting roofs and suspended ceilings, 360° angle of coverage, reach can be set up to 4 m, selectable time and twilight threshold, detection zone can be customised with shrouds.

# IS 360-1 DE

white

EAN 4007841 032845

Article number 032845



## Technical specifications

Type	Motion detectors
Dimensions (Ø x H)	78 x 89 mm
Mains power supply	230 – 240 V / 50 – 60 Hz
Sensor Technology	passive infrared
Application, place	Outdoors, Indoors
Installation site	ceiling
Installation	In-ceiling installation
Mounting height	2,50 – 4,00 m
Reach, radial	Ø 4 m (13 m <sup>2</sup> )
Reach, tangential	Ø 8 m (50 m <sup>2</sup> )
Detection angle	360 °
Angle of aperture	90 °
Switching zones	306 switching zones
Optimum mounting height	2,5 m
Mechanical scalability	No
Sneak-by guard	Yes
Capability of masking out individual segments	Yes
Electronic scalability	No
Twilight setting TEACH	No
Twilight setting	2 – 2000 lx
Time setting	8 s – 35 Min.
Output	1000 W
Switching output 1, resistive	1000 W
Switching output 1, number of LEDs / fluorescent lamps	6 pcs.
Fluorescent lamps, electronic ballast	430 W

Fluorescent lamps, uncorrected	500 VA
Fluorescent lamps, series-corrected	406 VA
Fluorescent lamps, parallel-corrected	406 VA
Switching output 1, low-voltage halogen lamps	1000 VA
LED lamps	16 W
LED lamps > 2 W	64 W
LED lamps > 8 W	64 W
Capacitive load in µF	132 µF
Constant-lighting control	No
Basic light level function	No
Settings via	Potentiometers
With remote control	No
Interconnection	Yes
Type of interconnection	Master/master
IP-rating	IP54
Material	Plastic
Ambient temperature	-20 – 40 °C
Application, room	outdoors, front door, all round the building, terrace / balcony, Indoors
Colour	white
Colour, RAL	9010
Manufacturer's Warranty	3 years
Version	white
PU1, EAN	4007841032845
Technology, sensors	passive infrared, Light sensor

## Motion detector

# IS 360-1 DE

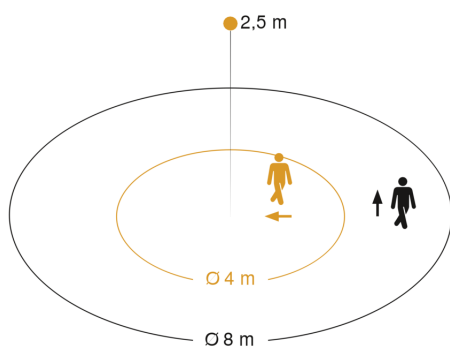
white

EAN 4007841 032845

Article number 032845



## Detection Zone

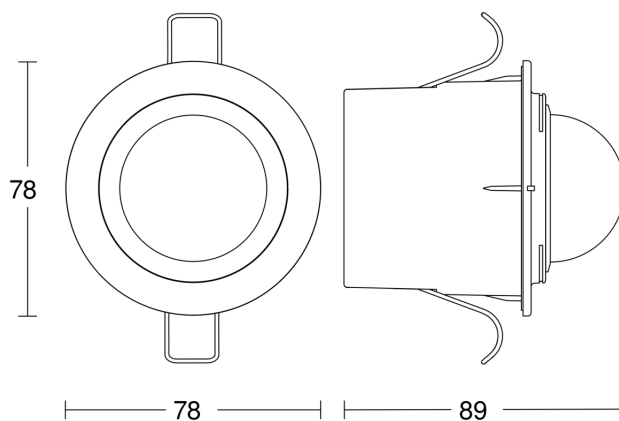


Mögliche Montagehöhe: 2,50 m – 4,00 m

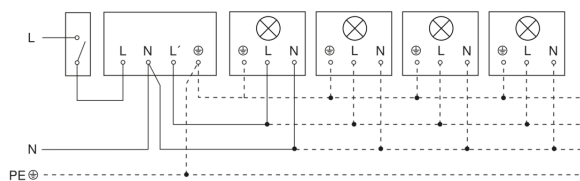
Orange: radial

Schwarz: tangential

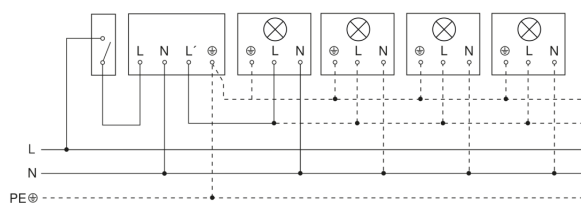
## Dimension Drawing



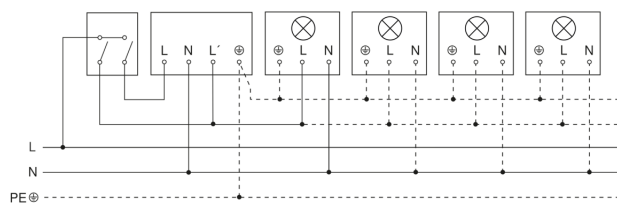
## Light without neutral conductor



## Light with neutral conductor



## Connection using two-circuit switch for manual and automatic operation



## Connection of 4-fold push-button coupler to DALI2 APC

